

The Belleville Times

News

Published as Second Class Matter, April 14, 1941 at the Post Office at Newark, N. J., under the Act of March 3, 1879.

BELLEVILLE, N. J., FRIDAY, APRIL 30, 1954

5c per copy

Fisher Begins Life Term At Same Prison Brother Is Confined

Joseph Fischer, 25, convicted killer of a 16-year-old Belleville high school boy, was scheduled to leave his Newark jail cell today to begin serving a life sentence at the Trenton State Prison, where his brother, Robert, was sentenced last month to a six to ten year term on robbery charges. Both men are Belleville residents.

Fischer had pleaded no defense before County Judge Edward Caulkin to the charge that he had beaten Harry Powell, 3rd, to death with a rock last December while the two walked along Branch Brook Park extension near the boy's home. His attorneys, Reynier Wortendyke and Joseph Harrison, who had been appointed by the court, declared the plea had been offered because of Fischer's background, which included a period spent in mental institutions. Fischer had been examined by three psychiatrists appointed by Judge Caulkin.

"I believe he is now sane, and society would be best served if he were sentenced to prison," Atty. Wortendyke said.

Fischer himself revealed the killing when he walked into the Belleville police station on the morning of Dec. 27, confessed the murder, then led officers to the body.

The slayer said he had met the boy on a bus in Newark, and that they had ridden back to Belleville together. While they were walking through the park toward Harry's home, Fischer said, the boy made a remark which he declared angered him. Fischer then picked up a rock and bludgeoned the boy to death with it. He admitted he had stolen the boy's overcoat, and a suitcase filled with clothing.

When Robert Fischer was arrested later, he confessed that he and Joseph had committed a hold-up in Newark together about a week before the murder. Robert also admitted holding up a cab driver in Belleville at the point of knife, then driving away from the cab. Later the same night Robert walked back to Newark, stole into a candy store, and robbed the proprietor of \$25. Two radio car patrolmen who were looking for him saw him enter a second candy store and seized him. Taken to a Newark jail, he attempted to commit suicide.

3 HONOR STUDENTS RECEIVE AWARDS OF SCHOLARSHIP

A total of \$9,140 in scholarships were awarded this week to Robert Kwik, Elaine Wische and Earl Dendler, seniors at Belleville high school. All three have achieved high scholastic standings and have participated in many extra-curricular activities at the high school.

Kwik, son of Mr. and Mrs. Julius Kwik of 140 Academy Street, was awarded the Union Graduate scholarship, which covers the full tuition of \$800 per year and a \$100 allowance for books and fees for a four year period.

Kwik has participated in the following activities: Junior Achievement, Junior Senate, band manager, stage crew, Belleville Bicycle Club and DeMolay. He received the College for Women, in 1952 she last year in a national competition and was elected to the National Honor Society in his junior year.

Elaine Wische, daughter of Mr. and Mrs. Herman Wische of 62 Lloyd Place, has been offered Junior Achievement scholarships by York University with full tuition for the first year, a \$300 scholarship for Keuka college covering half the tuition for two years, and a \$200 award by Seton Hall University for four years.

Wische has also been offered a scholarship by Ohio University, the University of Connecticut, Syracuse University and New Jersey College for Women. In 1952 she received an award in the "Scholastic" writing contest for an original radio drama.

Elected to the National Honor Society in her junior year, she is

(Continued On Page Five)

Little League To Have Own Field, Commission Agrees

Plans for a Little League baseball field on a town-owned 3 1/2 acre tract of land previously earmarked as a playground for the recreation department was approved Tuesday night by the Town Commission, which authorized leasing a portion of the property to the league. The area is located in the vicinity of the Third River and the Forest Hill Field Club. Details are to be arranged by Elmer S. Hyde, commissioner of parks and public property, and Warren A. Knight, League president.

Knight had suggested that the field be deeded to the League, but Town Attorney Lawrence A. Keenan pointed out that the land would then first have to be offered for public sale. The commission's organization plans to improve the land and build bleachers on the property. Cost to the League for the property is to be a dollar a year. The young children who are members of the League have had to play their games at Clearman Field under various handicaps.

Details further details of the proposed plan, Commissioner Hyde said the recreation department would install playground equipment, make provisions for a picnic area, and provide other facilities. The area was once part of a district that had been used for a playground, but a flood control project now makes the plan practical.

The commission said the area has grown so rapidly that it is in much need of the planned facilities.

VOTE 4 A - ELECTION

KENNETH D. SMITH - COMMISSIONER

PAID FOR BY KENNETH D. SMITH, ADV.

ELECTION — But this one is not quite like the Town Commission race except that it will be held on the same day. Here candidates for Belleville high school's student council hold hands in an all-for-one and one-for-all gesture for the benefit of the photographer. Left to right, Arline Generazio, Norman Fort, Patricia Paganelli, Tom Dolan, Howard Irving, Carol Vuons, Joseph Dente, and Dotty Zborowski.

Special Counsel For Fight On "Home" Is Voted By Commission

NEW PLAYGROUND TO BE DEDICATED TUESDAY MORNING

The Recreation Department has scheduled this dedication ceremony for the Louis M. Planseon playground for Tuesday morning, May 4th, on Stephen Street and Bellevue Avenue at 10:00 a.m. Reverend John Struyk of the Dutch Reformed Church will give the invocation.

Speakers will be Commissioner Elmer S. Hyde, Louis M. Planseon, Town Council member, and Robert E. Cook, Father Gerald Walsh of St. Mary's.

The Upper grade students of School No. 4, which adjoins the playground, will witness the dedication. The public is invited.

When completed, the new playground will include the most modern of playground equipment, a basketball court, a tennis court, a deck shuffleboard, and a deck shuffleboard. The area will be ready for this year's regular playground opening.

MEETING SET FOR BOY SCOUT CAMP LEADERS ON SAT.

Saturday beginning at 1 p.m., and ending at 5 p.m., the Robert Troop Council will conduct a Troop Camp Leaders' Pow Wow at the Newark Boys' Club, 161 Littleton Avenue, Newark.

Invited to attend are Scoutmasters and Junior Leaders, who will serve as Leaders at Camp Mohican this summer.

The three Junior Leaders from each Troop will each attend group meetings, one to prepare for work on the waterfront, one for training in the work of Troop Quartermaster and the third will be trained in Camp activities.

The Scoutmasters will attend a session on how to lead a Troop at camp and Troop Leaders who attend will be better prepared to make the most of their Troops camping experience at Mohican.

The annual Council Spring Camporee will be held at Teevan's Grove, in Livingston on May 14-15.

Troop challenge events, and Adventure Trail and a big Campfire on Saturday night will be features of the program.

Scouts are looking forward to the Campfire, because on the program will be a musical act by Lawrence Keenan assisted by Walter Finch, a member of the Belleville district committee, and law partner of Mr. Keenan.

(Continued From Page One)

Three Weeks Later — Sign Case Unchanged

The case of the political billboard remained no nearer solution today, three weeks after it first began. A sign advertising the candidacy of Atty. Robert C. Grubbs for the Town Commission was still planted directly in front of, and only about three feet removed, from another sign for Mayor Tully of Washington Avenue and Rutgers Street. Each continued to claim priority for the location. During the week, Grubbs offered to remove his sign entirely if Tully would likewise, but the mayor declined.

VOTE 4 A - ELECTION

KENNETH D. SMITH - COMMISSIONER

PAID FOR BY KENNETH D. SMITH, ADV.

VOTE 4 A - ELECTION

KENNETH D. SMITH - COMMISSIONER

PAID FOR BY KENNETH D. SMITH, ADV.

Tully Won't Sign Vara's Paychecks Unless Forced; No Action Against Waters

DISMISSAL MOTION ON INDICTMENTS SET FOR MAY 14

Arguments on motions for dismissal of indictments against four town officials and three contractors will be heard before Superior Court Judge G. Dixon Speakman on May 14, and the pleading date has been set for May 17. The county prosecutor's office told the Belleville Times-News last night.

Those indicted were Public Works Commissioner Patrick A. Waters; his brother, James, who resigned as superintendent of the water department shortly before the indictments were returned; Hugh Welsh, deputy public works director; Ralph Vara, who succeeded Elmer Waters as water works superintendent (as published exclusively in the April 2 issue of the Belleville Times-News); Carmen and Anna Silvestri, officers of the Silvestri Construction Company of Belleville; and W. Howard Lee, president of the Lee Engineering Service.

Attorneys for the town officials and for Lee have contended that the indictments are void in form, and that the statute which forbids municipalities from purchasing materials for more than \$1,000 without advertising for public bids is not a criminal law.

Turn Down Second Tully Request That It Take Control Of Public Works Department From Official

Mayor Tully announced last night that he would refuse to sign or counter-sign any increased pay vouchers for Ralph Vara, named last month as water works superintendent, because he insisted that Vara should not head the department in view of his indictment by an Essex County grand jury on charges growing out of town purchasing practices. Until his promotion, Vara was assistant superintendent.

"An indictment is not a conviction, and a man is entitled to the presumption that he is innocent until proven guilty, but it seems proper that a man in such a position should be suspended until his name is cleared," the mayor said. "I will not sign the vouchers unless it is ruled that I must legally do so."

At Tuesday's Town Commission meeting the commissioners had agreed to "study" further the mayor's request that an effort be made to investigate the possibility of rescinding Vara's promotion. The mayor said last night that Vara's promotion raised his salary from \$5,100 to \$5,400, plus an additional \$260 voted by the commission in a recent across-the-board pay increase for all town employees.

The board then asked Mayers to re-state his position at an executive session later the same evening, when they then informed him to return with a written statement of his arguments. Mayers was told that if he was not satisfied with any action taken by the board, he had the privilege of asking for an open hearing.

James R. Golden, a candidate for the Town Commission, who supported Mayers' case at the public meeting, declared that on the other hand Eugene Kelly, board president; Charles Loewy, vice-president; Walter Loescher, chairman of the building and grounds committee; and business manager Ruel E. Daniels, should all resign.

The board had omitted Mayers' name from its personnel list on the ground that he was "farming" out the work done by Mayers to some outside contractor, contending it appeared that a saving might be made. Golden, however, charged, flatly that the move was in reprisal against Mayers' grand jury charges.

Big Improvement Program Revealed For School System

An extensive improvement program for the public school system is being seriously considered by the Belleville Board of Education, and Evan H. Thomas, superintendent of schools, has already prepared an outline of such a plan, the Belleville Times-News learned last night.

The program includes a new building addition at the No. 7 school, additional classrooms in Schools No. 3 and 4, and improved playgrounds for Schools No. 2 and 7, in addition to construction of a new high school, which was previously announced. The program may be proposed as a single bond issue, and it was reported that a referendum vote may be asked on the question this summer.

Regardless of whether or not any of the board members named in the recent grand jury indictment eventually resign, all intend to support such a program for any such time as they remain in office, and at least one member of the school board who was

Blessing of campaign workers by the Rev. Thomas A. Roland, Archbishop of Newark, at the opening of a drive by the church to raise a minimum of \$150,000 for construction of a parochial school. Cost of the school will be approximately \$350,000, but the church already has a portion of the money represented in the difference between the two figures, and plans to provide the balance of the fund by bingo games and other means.

The Archbishop urged the parishioners to give complete support to the fund drive, and as a reward them of his prayers for their success.

Rev. Titian P. Menegus, pastor of the church, declared that the need for the school had long been a matter of immediate concern, and declared that its construction would relieve overcrowding in other schools in the area, "at the same time adding to the beauty and growth of the community."

The school is to be built on a 3 1/2 acre lot on North 7th Street near Montlath Street.

John last week was appointed as general chairman for the drive. Father Menegus yesterday named the following officers of the drive:

Associates to the general chairman, Michael Capanar and Ralph Riney; executive chairman, Anthony Moro, with Anthony Christians as his associate; business manager, Salvatore Spella, chairman, with Salvatore Pico and Alfred Quarano as associates; completion committee, Daniel Illera, chairman, and Anthony Forziano, Benjamin Maglio, and Alexander Zarillo, associates.

Other officers named were: Father Menegus, chairman; Joseph Barbone and Joseph Zarro.

A heavy percentage of the required funds is expected to be raised through the efforts of the non-parochial campaign.

Photo by Kunkel

Associates to the general chairman, Michael Capanar and Ralph Riney; executive chairman, Anthony Moro, with Anthony Christians as his associate; business manager, Salvatore Spella, chairman, with Salvatore Pico and Alfred Quarano as associates; completion committee, Daniel Illera, chairman, and Anthony Forziano, Benjamin Maglio, and Alexander Zarillo, associates.

Other officers named were: Father Menegus, chairman; Joseph Barbone and Joseph Zarro.

A heavy percentage of the required funds is expected to be raised through the efforts of the non-parochial campaign.

Photo by Kunkel

VOTE 4 A - ELECTION

KENNETH D. SMITH - COMMISSIONER

PAID FOR BY KENNETH D. SMITH, ADV.

VOTE 4 A - ELECTION

KENNETH D. SMITH - COMMISSIONER

PAID FOR BY KENNETH D. SMITH, ADV.

VOTE 4 A - ELECTION

KENNETH D. SMITH - COMMISSIONER

PAID FOR BY KENNETH D. SMITH, ADV.

Paid For By Elmer S. Hyde



SPOTLIGHT on SPORTS

By Bob Gorin

Top Eastern Riders To Tour Belleville

Bob Cook, Superintendent of Recreation, reports that entries have begun to come in for the "Tour of Belleville" bicycle races which will be run at Municipal Stadium on May 9. The big race attracts the best riders in the East. Belleville Ed Littig was first to register in the race. Among others from near and far who will compete are: from Arlington, Va., Rudy Hendrick, winner of the fast time in the 1953 Grand Prix; from Washington, D. C., Oliver N. Ward, winner of the German "100"; and George D. Edge, Jr., who was Pennsylvania State Champion in 1939 through 41, '47, '49 and 1950 through 1953. Edge finished seventh in last year's "Tour of Belleville."

Everyone who enjoys a good sports spectacle will definitely want to be in attendance for the Belleville races which start at 1:00 p. m. on Sunday, May 9, at the Municipal Stadium.

Little Leagues Conduct License "Blitz"

Little League managers have been hard at work preparing their respective teams for the official opening of the "major" loops on Saturday, May 8, at Clearman Field. While the more advanced players have been named to the official loops, rosters have also been drawn for two, four-team farm leagues. Each team is made up of 40 enthusiastic diamond hopefuls.

At the end of the new post of Little League Commissioner for the entire Belleville youth program has been popular Dick Dolan. Active in Little League circles, Dolan will be in charge of all activities on the field. Warren Knight, president, will continue to handle the administrative duties. One of the first moves by Dolan was the issuing of a plea for additional adult volunteers necessary for the running of the farm league program. The farm leagues will play its games in Municipal Stadium.

Another announcement was the naming of Norm Leach as official Little League scorekeeper. Leach is currently serving as secretary of the Varsity Club.

Starting Sunday about 20 adult volunteers will commence a townwide "blitz" to sell license plate tags to Little League supporters. The small plates read "Belleville Little League, 1954." In addition to the sale of the plates through the managers they may be purchased at Andersen and Fobert's Service Station, Belleville Rosary, O'Boyle's Ideal Milk Bar, Strat's Milk Bar and Mac's Barbecue.

Good Will Ambassadors Travel North

Belleville's crew went on its longest trip of the spring campaign last weekend when Coach Bill Bennett and his varsity charges left at 1 p. m. Friday for Hanover, New Hampshire, where the Bellboys faced the Dartmouth College heavyweight freshmen. The varsity crew were guests of Dartmouth and were housed in a college dormitory overnight. The Bennettmen returned to Belleville in an automobile only following the Saturday afternoon race won by the Blue and Gold.

Last weekend's trip was the first of six away regattas that will total more than 1,800 miles. The mileage for the round-trip in private cars to Northern New England was about 500 miles.

The Belleville crew is recognized as the town's most popular good will ambassador group as top college and private schools are scheduled each year. With more than 1,800 miles to be traveled by the high school rowing athletes it is a known fact that the carmen travel more miles a season than all other high school teams combined.

Following the 500-mile trip to Dartmouth, Belleville's ambassadors will participate in races in five other states before the 1954 slate is brought to a close in late May. Still on the agenda are jaunts to Philadelphia, Kent, Conn.,oughkeepsie, Worcester, Mass., and Middletown, Del.

Rollins College Has Local Flavor

Recent graduates of Belleville and Nutley High Schools visiting Winter Park, Florida, would probably forget their geographical location and start cheering for the old alma mater upon visiting Lake Mead on a Saturday morning when the Rollins College crew is in action. They would be able to count no less than five members of the Rollins crew who formerly raced under scholastic coach Bill Bennett, from Norman Gross, of Belleville, at stroke to Joe Dallanegra, of Nutley, in the coxswain's seat. Three other Belleville boys, Bud Bilenski, Don Weber and Frank Thompson, occupy the number 5, 6, and 7 positions in the Rollins shell.

The influx of local talent into the Tar crew started in 1952, when Bilenski and Gross entered Rollins as freshmen. Weber transferred that year from Rutgers, but was unable to row for Rollins until last spring. Frank Thompson, an all state football player, of Belleville, who still is a terror on the intra-mural field, passed up grid offers to come to Rollins last year and Dallanegra followed Weber's example and transferred to the central Florida school. Louis Fusaro, another Belleville boy, kept the Bennett delegation up to par last spring, coxing the Tars to the Florida state championship and second place in the Doc Vail regatta while Dallanegra sat out his year of ineligibility.

The Rollins crew, under Coach U. T. Bradley, generally considered the "father" of crew in the south, undertook its heaviest schedule in several years this spring and thus has not been able to post as impressive a record so far this season despite eight lettermen in the shell. The Tars lost an early season exhibition to Wisconsin and races to Boston University and Florida Southern while defeating Amherst before meeting Rutgers.

Dallanegra and Weber helped a Rollins effort that brought them within two feet of upsetting the Jerseyites' former alma mater in that race. Since that time the Tar crew has defeated Brown and A. I. C. easily.

With only Weber graduating this June, the Bennett representatives on the Rollins crew should have a banner rowing season next spring.

Burman Receives Honorable Mention

Gary Burman was accorded honorable mention in balloting of the Essex County CYO Basketball Player Award. Winner of the ninth award was Dave Fulcomer, of Montclair, as 17 coaches and sports writers voted for the top court performers. Twenty-four players were mentioned in the balloting. The CYO award is annually given to the Essex County high school player who has shown outstanding sportsmanship, fair play and ability. Burman was considered by Coach Jitty Williams to be one of the "cleanest" players known for his sportsmanship in the entire area.

Championship Bike Races To Attract Top Riders May 9

By Bob Cook

The 25-mile "Tour of Belleville" bicycle race which will be run at the Municipal Stadium on Sunday, May 9th, is shaping up into a real Belleville town event. The Red Cross will be on hand with a first aid tent; the police department, under Chief George Spatz, has offered its services for traffic control, the scouts of Recreation Department, Troop No. 392 will be busy patrolling the curbs, and Belleville's new ambulance corps will have an ambulance available. The races will be run clockwise, starting on Nolting Street, then into Greylock Parkway to Passaic Avenue, Division Avenue, and back into Nolting Street. This course is exactly a mile in length. Some of the best riders in the nation, as well as local contestants, are expected to take part.

This race, which carries the New Jersey state championship title, is also of national interest because it has been designated by the Amateur Bicycle League of America as a B.A.R. race in which riders can earn points towards the enormous B.A.R. trophy which is given to the "best all-around rider" in the nation. The B.A.R. designates our race as one of a series which will be run off throughout the country during the year.

The "Tour of Belleville" is actually a full afternoon of bicycle racing. There will be a race on stock bikes open to all youngsters under 14 years of age, a 14 to 17 year old race, a 18 to 20 year old race, and a 21 to 25 year old race. There will also be a 26 to 30 year old race, a 31 to 35 year old race, and a 36 to 40 year old race. The 21 to 25 year old race will be the first of the "major" loops. The 26 to 30 year old race will be the second, the 31 to 35 year old race will be the third, and the 36 to 40 year old race will be the fourth. The 14 to 17 year old race will be the fifth, the 18 to 20 year old race will be the sixth, and the 21 to 25 year old race will be the seventh. The 26 to 30 year old race will be the eighth, the 31 to 35 year old race will be the ninth, and the 36 to 40 year old race will be the tenth. The 14 to 17 year old race will be the eleventh, the 18 to 20 year old race will be the twelfth, and the 21 to 25 year old race will be the thirteenth. The 26 to 30 year old race will be the fourteenth, the 31 to 35 year old race will be the fifteenth, and the 36 to 40 year old race will be the sixteenth. The 14 to 17 year old race will be the seventeenth, the 18 to 20 year old race will be the eighteenth, and the 21 to 25 year old race will be the nineteenth. The 26 to 30 year old race will be the twentieth, the 31 to 35 year old race will be the twenty-first, and the 36 to 40 year old race will be the twenty-second. The 14 to 17 year old race will be the twenty-third, the 18 to 20 year old race will be the twenty-fourth, and the 21 to 25 year old race will be the twenty-fifth. The 26 to 30 year old race will be the twenty-sixth, the 31 to 35 year old race will be the twenty-seventh, and the 36 to 40 year old race will be the twenty-eighth. The 14 to 17 year old race will be the twenty-ninth, the 18 to 20 year old race will be the thirtieth, and the 21 to 25 year old race will be the thirty-first. The 26 to 30 year old race will be the thirty-second, the 31 to 35 year old race will be the thirty-third, and the 36 to 40 year old race will be the thirty-fourth. The 14 to 17 year old race will be the thirty-fifth, the 18 to 20 year old race will be the thirty-sixth, and the 21 to 25 year old race will be the thirty-seventh. The 26 to 30 year old race will be the thirty-eighth, the 31 to 35 year old race will be the thirty-ninth, and the 36 to 40 year old race will be the fortieth. The 14 to 17 year old race will be the forty-first, the 18 to 20 year old race will be the forty-second, and the 21 to 25 year old race will be the forty-third. The 26 to 30 year old race will be the forty-fourth, the 31 to 35 year old race will be the forty-fifth, and the 36 to 40 year old race will be the forty-sixth. The 14 to 17 year old race will be the forty-seventh, the 18 to 20 year old race will be the forty-eighth, and the 21 to 25 year old race will be the forty-ninth. The 26 to 30 year old race will be the fiftieth, the 31 to 35 year old race will be the fifty-first, and the 36 to 40 year old race will be the fifty-second. The 14 to 17 year old race will be the fifty-third, the 18 to 20 year old race will be the fifty-fourth, and the 21 to 25 year old race will be the fifty-fifth. The 26 to 30 year old race will be the fifty-sixth, the 31 to 35 year old race will be the fifty-seventh, and the 36 to 40 year old race will be the fifty-eighth. The 14 to 17 year old race will be the fifty-ninth, the 18 to 20 year old race will be the sixtieth, and the 21 to 25 year old race will be the sixty-first. The 26 to 30 year old race will be the sixty-second, the 31 to 35 year old race will be the sixty-third, and the 36 to 40 year old race will be the sixty-fourth. The 14 to 17 year old race will be the sixty-fifth, the 18 to 20 year old race will be the sixty-sixth, and the 21 to 25 year old race will be the sixty-seventh. The 26 to 30 year old race will be the sixty-eighth, the 31 to 35 year old race will be the sixty-ninth, and the 36 to 40 year old race will be the seventieth. The 14 to 17 year old race will be the seventy-first, the 18 to 20 year old race will be the seventy-second, and the 21 to 25 year old race will be the seventy-third. The 26 to 30 year old race will be the seventy-fourth, the 31 to 35 year old race will be the seventy-fifth, and the 36 to 40 year old race will be the seventy-sixth. The 14 to 17 year old race will be the seventy-seventh, the 18 to 20 year old race will be the seventy-eighth, and the 21 to 25 year old race will be the seventy-ninth. The 26 to 30 year old race will be the eightieth, the 31 to 35 year old race will be the eighty-first, and the 36 to 40 year old race will be the eighty-second. The 14 to 17 year old race will be the eighty-third, the 18 to 20 year old race will be the eighty-fourth, and the 21 to 25 year old race will be the eighty-fifth. The 26 to 30 year old race will be the eighty-sixth, the 31 to 35 year old race will be the eighty-seventh, and the 36 to 40 year old race will be the eighty-eighth. The 14 to 17 year old race will be the eighty-ninth, the 18 to 20 year old race will be the ninetieth, and the 21 to 25 year old race will be the ninety-first. The 26 to 30 year old race will be the ninety-second, the 31 to 35 year old race will be the ninety-third, and the 36 to 40 year old race will be the ninety-fourth. The 14 to 17 year old race will be the ninety-fifth, the 18 to 20 year old race will be the ninety-sixth, and the 21 to 25 year old race will be the ninety-seventh. The 26 to 30 year old race will be the ninety-eighth, the 31 to 35 year old race will be the ninety-ninth, and the 36 to 40 year old race will be the one hundredth.

CAMPAIGN SUNDAY FOR \$300 TO BUY KIDS EQUIPMENT

About \$300 would do it. More would be helpful, but \$300 would just about do it.

The money is to buy equipment for Belleville's Little League baseball team, whose members range in age from eight to 12.

The time is this Sunday, when about 100 adults and youngsters will stage a one-day campaign to raise the money through the sale of license plate emblems stamped with this slogan: "Belleville Little League, 1954." Plans for the drive were announced by Warren Knight, League president.

Teams are divided into two leagues, each composed of four teams. The 8 to 12 year olds are divided into two leagues, each composed of four teams. The 13 to 17 year olds are divided into two leagues, each composed of four teams. The 18 to 25 year olds are divided into two leagues, each composed of four teams. The 26 to 35 year olds are divided into two leagues, each composed of four teams. The 36 to 45 year olds are divided into two leagues, each composed of four teams. The 46 to 55 year olds are divided into two leagues, each composed of four teams. The 56 to 65 year olds are divided into two leagues, each composed of four teams. The 66 to 75 year olds are divided into two leagues, each composed of four teams. The 76 to 85 year olds are divided into two leagues, each composed of four teams. The 86 to 95 year olds are divided into two leagues, each composed of four teams. The 96 to 105 year olds are divided into two leagues, each composed of four teams. The 106 to 115 year olds are divided into two leagues, each composed of four teams. The 116 to 125 year olds are divided into two leagues, each composed of four teams. The 126 to 135 year olds are divided into two leagues, each composed of four teams. The 136 to 145 year olds are divided into two leagues, each composed of four teams. The 146 to 155 year olds are divided into two leagues, each composed of four teams. The 156 to 165 year olds are divided into two leagues, each composed of four teams. The 166 to 175 year olds are divided into two leagues, each composed of four teams. The 176 to 185 year olds are divided into two leagues, each composed of four teams. The 186 to 195 year olds are divided into two leagues, each composed of four teams. The 196 to 205 year olds are divided into two leagues, each composed of four teams. The 206 to 215 year olds are divided into two leagues, each composed of four teams. The 216 to 225 year olds are divided into two leagues, each composed of four teams. The 226 to 235 year olds are divided into two leagues, each composed of four teams. The 236 to 245 year olds are divided into two leagues, each composed of four teams. The 246 to 255 year olds are divided into two leagues, each composed of four teams. The 256 to 265 year olds are divided into two leagues, each composed of four teams. The 266 to 275 year olds are divided into two leagues, each composed of four teams. The 276 to 285 year olds are divided into two leagues, each composed of four teams. The 286 to 295 year olds are divided into two leagues, each composed of four teams. The 296 to 305 year olds are divided into two leagues, each composed of four teams. The 306 to 315 year olds are divided into two leagues, each composed of four teams. The 316 to 325 year olds are divided into two leagues, each composed of four teams. The 326 to 335 year olds are divided into two leagues, each composed of four teams. The 336 to 345 year olds are divided into two leagues, each composed of four teams. The 346 to 355 year olds are divided into two leagues, each composed of four teams. The 356 to 365 year olds are divided into two leagues, each composed of four teams. The 366 to 375 year olds are divided into two leagues, each composed of four teams. The 376 to 385 year olds are divided into two leagues, each composed of four teams. The 386 to 395 year olds are divided into two leagues, each composed of four teams. The 396 to 405 year olds are divided into two leagues, each composed of four teams. The 406 to 415 year olds are divided into two leagues, each composed of four teams. The 416 to 425 year olds are divided into two leagues, each composed of four teams. The 426 to 435 year olds are divided into two leagues, each composed of four teams. The 436 to 445 year olds are divided into two leagues, each composed of four teams. The 446 to 455 year olds are divided into two leagues, each composed of four teams. The 456 to 465 year olds are divided into two leagues, each composed of four teams. The 466 to 475 year olds are divided into two leagues, each composed of four teams. The 476 to 485 year olds are divided into two leagues, each composed of four teams. The 486 to 495 year olds are divided into two leagues, each composed of four teams. The 496 to 505 year olds are divided into two leagues, each composed of four teams. The 506 to 515 year olds are divided into two leagues, each composed of four teams. The 516 to 525 year olds are divided into two leagues, each composed of four teams. The 526 to 535 year olds are divided into two leagues, each composed of four teams. The 536 to 545 year olds are divided into two leagues, each composed of four teams. The 546 to 555 year olds are divided into two leagues, each composed of four teams. The 556 to 565 year olds are divided into two leagues, each composed of four teams. The 566 to 575 year olds are divided into two leagues, each composed of four teams. The 576 to 585 year olds are divided into two leagues, each composed of four teams. The 586 to 595 year olds are divided into two leagues, each composed of four teams. The 596 to 605 year olds are divided into two leagues, each composed of four teams. The 606 to 615 year olds are divided into two leagues, each composed of four teams. The 616 to 625 year olds are divided into two leagues, each composed of four teams. The 626 to 635 year olds are divided into two leagues, each composed of four teams. The 636 to 645 year olds are divided into two leagues, each composed of four teams. The 646 to 655 year olds are divided into two leagues, each composed of four teams. The 656 to 665 year olds are divided into two leagues, each composed of four teams. The 666 to 675 year olds are divided into two leagues, each composed of four teams. The 676 to 685 year olds are divided into two leagues, each composed of four teams. The 686 to 695 year olds are divided into two leagues, each composed of four teams. The 696 to 705 year olds are divided into two leagues, each composed of four teams. The 706 to 715 year olds are divided into two leagues, each composed of four teams. The 716 to 725 year olds are divided into two leagues, each composed of four teams. The 726 to 735 year olds are divided into two leagues, each composed of four teams. The 736 to 745 year olds are divided into two leagues, each composed of four teams. The 746 to 755 year olds are divided into two leagues, each composed of four teams. The 756 to 765 year olds are divided into two leagues, each composed of four teams. The 766 to 775 year olds are divided into two leagues, each composed of four teams. The 776 to 785 year olds are divided into two leagues, each composed of four teams. The 786 to 795 year olds are divided into two leagues, each composed of four teams. The 796 to 805 year olds are divided into two leagues, each composed of four teams. The 806 to 815 year olds are divided into two leagues, each composed of four teams. The 816 to 825 year olds are divided into two leagues, each composed of four teams. The 826 to 835 year olds are divided into two leagues, each composed of four teams. The 836 to 845 year olds are divided into two leagues, each composed of four teams. The 846 to 855 year olds are divided into two leagues, each composed of four teams. The 856 to 865 year olds are divided into two leagues, each composed of four teams. The 866 to 875 year olds are divided into two leagues, each composed of four teams. The 876 to 885 year olds are divided into two leagues, each composed of four teams. The 886 to 895 year olds are divided into two leagues, each composed of four teams. The 896 to 905 year olds are divided into two leagues, each composed of four teams. The 906 to 915 year olds are divided into two leagues, each composed of four teams. The 916 to 925 year olds are divided into two leagues, each composed of four teams. The 926 to 935 year olds are divided into two leagues, each composed of four teams. The 936 to 945 year olds are divided into two leagues, each composed of four teams. The 946 to 955 year olds are divided into two leagues, each composed of four teams. The 956 to 965 year olds are divided into two leagues, each composed of four teams. The 966 to 975 year olds are divided into two leagues, each composed of four teams. The 976 to 985 year olds are divided into two leagues, each composed of four teams. The 986 to 995 year olds are divided into two leagues, each composed of four teams. The 996 to 1005 year olds are divided into two leagues, each composed of four teams. The 1006 to 1015 year olds are divided into two leagues, each composed of four teams. The 1016 to 1025 year olds are divided into two leagues, each composed of four teams. The 1026 to 1035 year olds are divided into two leagues, each composed of four teams. The 1036 to 1045 year olds are divided into two leagues, each composed of four teams. The 1046 to 1055 year olds are divided into two leagues, each composed of four teams. The 1056 to 1065 year olds are divided into two leagues, each composed of four teams. The 1066 to 1075 year olds are divided into two leagues, each composed of four teams. The 1076 to 1085 year olds are divided into two leagues, each composed of four teams. The 1086 to 1095 year olds are divided into two leagues, each composed of four teams. The 1096 to 1105 year olds are divided into two leagues, each composed of four teams. The 1106 to 1115 year olds are divided into two leagues, each composed of four teams. The 1116 to 1125 year olds are divided into two leagues, each composed of four teams. The 1126 to 1135 year olds are divided into two leagues, each composed of four teams. The 1136 to 1145 year olds are divided into two leagues, each composed of four teams. The 1146 to 1155 year olds are divided into two leagues, each composed of four teams. The 1156 to 1165 year olds are divided into two leagues, each composed of four teams. The 1166 to 1175 year olds are divided into two leagues, each composed of four teams. The 1176 to 1185 year olds are divided into two leagues, each composed of four teams. The 1186 to 1195 year olds are divided into two leagues, each composed of four teams. The 1196 to 1205 year olds are divided into two leagues, each composed of four teams. The 1206 to 1215 year olds are divided into two leagues, each composed of four teams. The 1216 to 1225 year olds are divided into two leagues, each composed of four teams. The 1226 to 1235 year olds are divided into two leagues, each composed of four teams. The 1236 to 1245 year olds are divided into two leagues, each composed of four teams. The 1246 to 1255 year olds are divided into two leagues, each composed of four teams. The 1256 to 1265 year olds are divided into two leagues, each composed of four teams. The 1266 to 1275 year olds are divided into two leagues, each composed of four teams. The 1276 to 1285 year olds are divided into two leagues, each composed of four teams. The 1286 to 1295 year olds are divided into two leagues, each composed of four teams. The 1296 to 1305 year olds are divided into two leagues, each composed of four teams. The 1306 to 1315 year olds are divided into two leagues, each composed of four teams. The 1316 to 1325 year olds are divided into two leagues, each composed of four teams. The 1326 to 1335 year olds are divided into two leagues, each composed of four teams. The 1336 to 1345 year olds are divided into two leagues, each composed of four teams. The 1346 to 1355 year olds are divided into two leagues, each composed of four teams. The 1356 to 1365 year olds are divided into two leagues, each composed of four teams. The 1366 to 1375 year olds are divided into two leagues, each composed of four teams. The 1376 to 1385 year olds are divided into two leagues, each composed of four teams. The 1386 to 1395 year olds are divided into two leagues, each composed of four teams. The 1396 to 1405 year olds are divided into two leagues, each composed of four teams. The 1406 to 1415 year olds are divided into two leagues, each composed of four teams. The 1416 to 1425 year olds are divided into two leagues, each composed of four teams. The 1426 to 1435 year olds are divided into two leagues, each composed of four teams. The 1436 to 1445 year olds are divided into two leagues, each composed of four teams. The 1446 to 1455 year olds are divided into two leagues, each composed of four teams. The 1456 to 1465 year olds are divided into two leagues, each composed of four teams. The 1466 to 1475 year olds are divided into two leagues, each composed of four teams. The 1476 to 1485 year olds are divided into two leagues, each composed of four teams. The 1486 to 1495 year olds are divided into two leagues, each composed of four teams. The 1496 to 1505 year olds are divided into two leagues, each composed of four teams. The 1506 to 1515 year olds are divided into two leagues, each composed of four teams. The 1516 to 1525 year olds are divided into two leagues, each composed of four teams. The 1526 to 1535 year olds are divided into two leagues, each composed of four teams. The 1536 to 1545 year olds are divided into two leagues, each composed of four teams. The 1546 to 1555 year olds are divided into two leagues, each composed of four teams. The 1556 to 1565 year olds are divided into two leagues, each composed of four teams. The 1566 to 1575 year olds are divided into two leagues, each composed of four teams. The 1576 to 1585 year olds are divided into two leagues, each composed of four teams. The 1586 to 1595 year olds are divided into two leagues, each composed of four teams. The 1596 to 1605 year olds are divided into two leagues, each composed of four teams. The 1606 to 1615 year olds are divided into two leagues, each composed of four teams. The 1616 to 1625 year olds are divided into two leagues, each composed of four teams. The 1626 to 1635 year olds are divided into two leagues, each composed of four teams. The 1636 to 1645 year olds are divided into two leagues, each composed of four teams. The 1646 to 1655 year olds are divided into two leagues, each composed of four teams. The 1656 to 1665 year olds are divided into two leagues, each composed of four teams. The 1666 to 1675 year olds are divided into two leagues, each composed of four teams. The 1676 to 1685 year olds are divided into two leagues, each composed of four teams. The 1686 to 1695 year olds are divided into two leagues, each composed of four teams. The 1696 to 1705 year olds are divided into two leagues, each composed of four teams. The 1706 to 1715 year olds are divided into two leagues, each composed of four teams. The 1716 to 1725 year olds are divided into two leagues, each composed of four teams. The 1726 to 1735 year olds are divided into two leagues, each composed of four teams. The 1736 to 1745 year olds are divided into two leagues, each composed of four teams. The 1746 to 1755 year olds are divided into two leagues, each composed of four teams. The 1756 to 1765 year olds are divided into two leagues, each composed of four teams. The 1766 to 1775 year olds are divided into two leagues, each composed of four teams. The 1776 to 1785 year olds are divided into two leagues, each composed of four teams. The 1786 to 1795 year olds are divided into two leagues, each composed of four teams. The 1796 to 1805 year olds are divided into two leagues, each composed of four teams. The 1806 to 1815 year olds are divided into two leagues, each composed of four teams. The 1816 to 1825 year olds are divided into two leagues, each composed of four teams. The 1826 to 1835 year olds are divided into two leagues, each composed of four teams. The 1836 to 1845 year olds are divided into two leagues, each composed of four teams. The 1846 to 1855 year olds are divided into two leagues, each composed of four teams. The 1856 to 1865 year olds are divided into two leagues, each composed of four teams. The 1866 to 1875 year olds are divided into two leagues, each composed of four teams. The 1876 to 1885 year olds are divided into two leagues, each composed of four teams. The 1886 to 1895 year olds are divided into two leagues, each composed of four teams. The 1896 to 1905 year olds are divided into two leagues, each composed of four teams. The 1906 to 1915 year olds are divided into two leagues, each composed of four teams. The 1916 to 1925 year olds are divided into two leagues, each composed of four teams. The 1926 to 1935 year olds are divided into two leagues, each composed of four teams. The 1936 to 1945 year olds are divided into two leagues, each composed of four teams. The 1946 to 1955 year olds are divided into two leagues, each composed of four teams. The 1956 to 1965 year olds are divided into two leagues, each composed of four teams. The 1966 to 1975 year olds are divided into two leagues, each composed of four teams. The 1976 to 1985 year olds are divided into two leagues, each composed of four teams. The 1986 to 1995 year olds are divided into two leagues, each composed of four teams. The 1996 to 2005 year olds are divided into two leagues, each composed of four teams. The 2006 to 2015 year olds are divided into two leagues, each composed of four teams. The 2016 to 2025 year olds are divided into two leagues, each composed of four teams. The 2026 to 2035 year olds are divided into two leagues, each composed of four teams. The 2036 to 2045 year olds are divided into two leagues, each composed of four teams. The 2046 to 2055 year olds are divided into two leagues, each composed of four teams. The 2056 to 2065 year olds are divided into two leagues, each composed of four teams. The 2066 to 2075 year olds are divided into two leagues, each composed of four teams. The 2076 to 2085 year olds are divided into two leagues, each composed of four teams. The 2086 to 2095 year olds are divided into two leagues, each composed of four teams. The 2096 to 2105 year olds are divided into two leagues, each composed of four teams. The 2106 to 2115 year olds are divided into two leagues, each composed of four teams. The 2116 to 2125 year olds are divided into two leagues, each composed of four teams. The 2126 to 2135 year olds are divided into two leagues, each composed of four teams. The 2136 to 2145 year olds are divided into two leagues, each composed of four teams. The 2146 to 2155 year olds are divided into two leagues, each composed of four teams. The 2156 to 2165 year olds are divided into two leagues, each composed of four teams. The 2166 to 2175 year olds are divided into two leagues, each composed of four teams. The 2176 to 2185 year olds are divided into two leagues, each composed of four teams. The 2186 to 2195 year olds are divided into two leagues, each composed of four teams. The 2196 to 2205 year olds are divided into two leagues, each composed of four teams. The 2206 to 2215 year olds are divided into two leagues, each composed of four teams. The 2216 to 2225 year olds are divided into two leagues, each composed of four teams. The 2226 to 2235 year olds are divided into two leagues, each composed of four teams. The 2236 to 2245 year olds are divided into two leagues, each composed of four teams. The 2246 to 2255 year olds are divided into two leagues, each composed of four teams. The 2256 to 2265 year olds are divided into two leagues, each composed of four teams. The 2266 to 2275 year olds are divided into two leagues, each composed of four teams. The 2276 to 2285 year olds are divided into two leagues, each composed of four teams. The 2286 to 2295 year olds are divided into two leagues, each composed of four teams. The 2296 to 2305 year olds are divided into two leagues, each composed of four teams. The 2306 to 2315 year olds are divided into two leagues, each composed of four teams. The 2316 to 2325 year olds are divided into two leagues, each composed of four teams. The 2326 to 2335 year olds are divided into two leagues, each composed of four teams. The 2336 to 2345 year olds are divided into two leagues, each composed of four teams. The 2346 to 2355 year olds are divided into two leagues, each composed of four teams. The 2356 to 2365 year olds are divided into two leagues, each composed of four teams. The 2366 to 2375 year olds are divided into two leagues, each composed of four teams. The 2376 to 2385 year olds are divided into two leagues, each composed of four teams. The 2386 to 2395 year olds are divided into two leagues, each composed of four teams. The 2396 to 2405 year olds are divided into two leagues, each composed of four teams. The 2406 to 2415 year olds are divided into two leagues, each composed of four teams. The 2416 to 2425 year olds are divided into two leagues, each composed of four teams. The 2426 to 2435 year olds are divided into two leagues, each composed of four teams. The 2436 to 2445 year olds are divided into two leagues, each composed of four teams. The 2446 to 2455 year olds are divided into two leagues, each composed of four teams. The 2456 to 2465 year olds are divided into two leagues, each composed of four teams. The 2466 to 2475 year olds are divided into two leagues, each composed of four teams. The 2476 to 2485 year olds are divided into two leagues, each composed of four teams. The 2486 to 2495 year olds are divided into two leagues, each composed of four teams. The 2496 to 2505 year olds are divided into two leagues, each composed of four teams. The 2506 to 2515 year olds are divided into two leagues, each composed of four teams. The 2516 to 2525 year olds are divided into two leagues, each composed of four teams. The 2526 to 2535 year olds are divided into two leagues, each composed of four teams. The 2536 to 2545 year olds are divided into two leagues, each composed of four teams. The 2546 to 2555 year olds are divided into two leagues, each composed of four teams. The 2556 to 2565 year olds are divided into two leagues, each composed of four teams. The 2566 to 2575 year olds are divided into two leagues, each composed of four teams. The 2576 to 2585 year olds are divided into two leagues, each composed of four teams. The 2586 to 2595 year olds are divided into two leagues, each composed of four teams. The 2596 to 2605 year olds are divided into two leagues, each composed of four teams. The 2606 to 2615 year olds are divided into two leagues, each composed of four teams. The 2616 to 2625 year olds are divided into two leagues, each composed of four teams. The 2626 to 2635 year olds are divided into two leagues, each composed of four teams. The 2636 to 2645 year olds are divided into two leagues, each composed of four teams. The 2646 to 2655 year olds are divided into two leagues, each composed of four teams. The 2656 to 2665 year olds are divided into two leagues, each composed of four teams. The 2666 to 2675 year olds are divided into two leagues, each composed of four teams. The 2676 to 2685 year olds are divided into two leagues, each composed of four teams. The 2686 to 2695 year olds are divided into two leagues, each composed of four teams. The 2696 to 2705 year olds are divided into two leagues, each composed of four teams. The 2706 to 2715 year olds are divided into two leagues, each composed of four teams. The 2716 to 2725 year olds are divided into two leagues, each composed of four teams. The 2726 to 2735 year olds are divided into two leagues, each composed of four teams. The 2736 to 2745 year olds are divided into two leagues, each composed of four teams. The 2746 to 2755 year olds are divided into two leagues, each composed of four teams. The 2756 to 2765 year olds are divided into two leagues, each composed of four teams. The 2766 to 2775 year olds are divided into two leagues, each composed of four teams. The 2776 to 2785 year olds are divided into two leagues, each composed of four teams. The 2786 to 2795 year olds are divided into two leagues, each composed of four teams. The 2796 to 2805 year olds are divided into two leagues, each composed of four teams. The 2806 to 2815 year olds are divided into two leagues, each composed of four teams. The 2816 to 2825 year olds are divided into two leagues, each composed of four teams. The 2826 to 2835 year olds are divided into two leagues, each composed of four teams. The 2836 to 2845 year olds are divided into two leagues, each composed of four teams. The 2846 to 2855 year olds are divided into two leagues, each composed of four teams. The 2856 to 2865 year olds are divided into two leagues, each composed of four teams. The 2866 to 2875 year olds are divided into two leagues, each composed of four teams. The 2876 to 2885 year olds are divided into two leagues, each composed of four teams. The 2886 to 2895 year olds are divided into two leagues, each composed of four teams. The 2896 to 2905 year olds are divided into two leagues, each composed of four teams. The 2906 to 2915 year olds are divided into two leagues, each composed of four teams. The 2916 to 2925 year olds are divided into two leagues, each composed of four teams. The 2926 to 2935 year olds are divided into two leagues, each composed of four teams. The 2936 to 2945 year olds are divided into two leagues, each composed of four teams. The 2946 to 2955 year olds are divided into two leagues, each composed of four teams. The 2956 to 2965 year olds are divided into two leagues, each composed of four teams. The 2966 to 2975 year olds are divided into two leagues, each composed of

Spring Dinner Rally For State Baptist Men

A spring dinner rally for the men of the N. J. Baptist Association will be held in the First Baptist church, 170 Elm Street, Westfield on Wednesday evening, May 14. Reservations for the affair may be made through the First Baptist, Grace or Silver Lake Baptist churches in Belleville.

Three group meetings will follow the dinner, a "Churches Without Men's Organization", "Churches With Men's Organization" and "Cabinet Meeting" led by Russell G. Ackerman, Gerald W. Higgins and J. Howard Williams, respectively.

Plans of the 22nd annual retreat of the council last June will be presented in a brief devotional period led by Howard Williams will conclude the program.



WE SHOULD RE-ELECT JAMES J. TULLY COMMISSIONER

BECAUSE - -

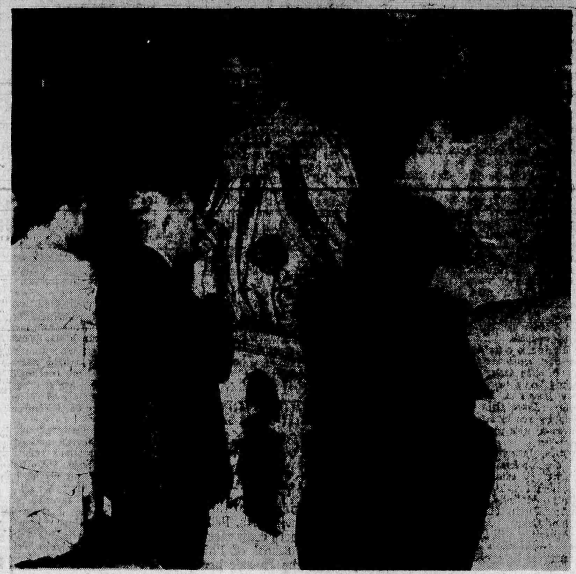
He has earned the respect of our Community by his forthright and courageous action on vital matters affecting our Town.

He faces the issues squarely and has the courage of his convictions.

I am going to actively support Jim Tully and ask my friends to do the same.

Anthony D. Lucello
128 Brighton Avenue
Belleville, N. J.

vote 3a



BLESSING — Rev. Thomas A. Roland, Archbishop of Newark, blesses campaign workers for funds to build a parochial school at services at the Church of St. Anthony. Kissing the Archbishop's ring is Isadore Padula, general chairman for the drive. Standing by Archbishop Boland is the Rev. Titian P. Menegus, pastor of the church.

PRIVATE PARKING FACILITIES

Personal supervision of all services assures proper attention to details which are always important. All services reflect careful planning to assure quiet and even continuity and result in services of refinement and character.

Over a Half Century of Service to Our Community

IRVINE AND SON FUNERAL HOME

WM. V. IRVINE • Director • WM. V. IRVINE, JR.

276 WASHINGTON AVE., BELLEVILLE, N. J.

Telephone **PLYMOUTH 9-1114**

ORMSBY AT RALLY FOR R. C. GRUHIN

Alexander P. Ormsby, past national commander of Marines, trustee of Seton Hall University, and former president-judge of the Hudson County Court of Common Pleas, will be the guest speaker at a rally in behalf of his candidacy at the Belleville Elks Club at 8:30 p. m. May 5. Robert C. Gruhin announced yesterday. The public was invited to attend.

Gruhin said he would discuss the primary issues of the campaign.

OUR CLASSIFIED SECTION BRINGS QUICK RESULTS

Life at BHS As We See It



By Elaine Wiache and Lois Blomeste

Election time has come to Belleville High School once again. The school corridors have been decorated with campaign posters and signs, and people have begun discussing their favorite Student Council candidates. Highlights of the campaign will be the elections assembly to be held May 7, at which anything can happen and usually does. There'll be music, stunts, and plenty of old-fashioned speech-making. It will be an opportune time for all under less men (the seniors are setting the qualifications of each individual candidate to enable them to choose wisely at the polls. Running a hot race for Student Council President are Tom Dolan, Howard Irvine, and Joe Dente; vice president, the Norman Post and Harry Glass; secretary, Pat Fusacelli and Carol Vynone; and treasurer, Arlene Generazio and Dot Zhorowski.

Good luck to all the candidates and may the best ones win!

We are happy to report the success of the Junior Prom held at the Meadowbrook, April 20th; the event was all that we hoped it would be. A special vote of thanks should go to the members of the Prom Committee who helped make this year's prom the memorable one that it was. We'll never forget, too, Ed Zaczek's wild dancing and Harry Valante's "crazy" white bucks.

The long-awaited twirling results have been posted at last. The best of luck to those 28 girls who made the squad for 1954. Among those chosen were: Ann Boiesak, Elaine Schneider, Dottie Geisler, Jean Schwartz, Gloria Barnett, Alice Bauer, Marilyn Teropini, Annette Mele, Joan Connolly, Peggy Burke, Kay Carroll, Angie Fusaro, Grace Abbott, Carol Vynone, Ann Carney, Sandy Shaw, Anita Godfrey, and Sandy Interfont. Also, Angela Antichiaro, Nancy Rossi, Annie Di Piero, Mary Rose Manzella, Rachel Manzella, Pat Scott, Geneva Rossi, Barbara Blensky, Barbara Anania, and Barbara Maugher.

This year Belleville high will be represented at New Jersey Girls' State by Lois Woolman and Annie Fusaro. A mythical fiftieth state, sponsored by the American Legion Auxiliary, the convention is held for one week on the N.J.C. campus in New Brunswick. There the girls spend their time attending lectures and lectures in addition to enjoying the various facilities available on the campus. Elections are held for city, county, and state officials with the highlight of the week being the gubernatorial election.

Overhead the other day, Harry Valante was playing at a church

dance recently and found it quite difficult to see the music in the dimly lit room. A sympathetic person there, luck to Harry's embarrassment, obligingly brought over a stick of candlelight and placed it on the piano. The place immediately went into an uproar.

With reference to an old song, "You gotta be a football hero to get along with a beautiful girl," we see that Leona Salandri is no sporting a ring belonging to a certain fellow by the name of Rocco Cafone. . . 300's Nick Testaroli is planning to audition for Ted Mack's Original Amateur Hour in the near future. . . Judy and Paula Abramson have just returned from Florida sporting a beautiful coat of tan.

CAMPUS CORNER

James B. Anderson, Jr., son of Officer and Mrs. James B. Anderson of 12 Wilson Place, was formerly installed into the Phi Beta Kappa fraternity of Rutgers University on Wednesday. A dinner and dance in New Brunswick feasted the men entering the society.

Anderson, a graduate of Belleville high school, is a senior at Rutgers in Newark and is majoring in zoology.

Roger A. Hanson, son of Mr. and Mrs. George Hanson of 104 Overlook Avenue, a member of Yale University, class of '55, has been elected to the Aurelian Honor Society.

This senior society, founded in 1910, annually elects to membership 10 Juniors outstanding in scholastic and extra-curricular activities.

Charles W. Maguire of 450 Washington Avenue, was elected vice-president of the class of 1957 at Newark College of Engineering, it was announced yesterday by professor Joseph M. Fitzgerald, faculty adviser.

Maguire, an alumnus of Belleville high, was president of the student council and a member of the varsity basketball team.

OUR CLASSIFIED SECTION BRINGS QUICK RESULTS

Wm. C. Smith Dispensing Optician

334 Washington Ave. Belleville, N. J. PL 9-6252

E. F. McDonald, Jr.
Zenith Hearing Aids
Chicago, Illinois

Dear Commander McDonald:

May we say, right off, that we plan to tell our friends and customers, in an open letter, the same thing we're telling you. We want them to know exactly how we stand where your company is concerned and how proud we are to be selling Zenith Hearing Aids.

We go all out for Zenith. We can't say enough about the new, tubeless, 3-transistor "Royal-T" Hearing Aid and Zenith's policy. We do a lot of talking about Zenith's low price and 10-day money-back guarantee and 5-year service plan. But we shout loudest (even when a customer isn't hard of hearing!) about what you call Zenith's "hear-better features." They add up to the greatest combination of electronic and engineering achievements that any of us has ever run across in one hearing aid!

What we also want to compliment you about is something you emphasize in your ads all the time. You say to people, again and again, "see your physician before buying any hearing aid." We wish everyone would take that advice.

We have folks who come in our store and want a hearing aid when all they really need is to have a little wax taken out of their ears. We have many folks come in who really do need a hearing aid, and they think we're some kind of doctors or ear-specialists. We're not. But some hearing-aid ads give the impression that a dealer is practically a doctor or an ear-drum specialist or a mastoid-master. That just isn't true. . . which brings us right back to the best and most honest advice a hearing-aid manufacturer ever gave the public: see your physician first.

And here's something else we thank Zenith for. It's that 10-day money-back guarantee. It lets a hard-of-hearing person try out his Zenith Aid under all hearing conditions, in his home, with his family, in church, in the theater and at work. And he can check with his physician at the same time.

Because of the low selling price and our low margin of profit on Zenith Hearing Aids, we do not accept used instruments in trade. . . moreover, we don't believe in selling secondhand instruments to anyone. Our customers like the fact that they can buy the Zenith "Royal-T" for only \$125, keep their vacuum-tube hearing aid for a spare and have two hearing aids for less than what some other transistor aids would cost, even with a trade-in allowance of \$50.00 or so. And our customers really go for that unbelievably low battery operating cost of 15c a month!

And now, Commander, we'd like to ask you a favor . . . although we know it isn't necessary: keep up the good work. Stick to your policy of better hearing at lower cost. Stick to your policy of better hearing through sound advice to the readers of your ads. We're 100% back of your principles and policies because they are what have made our business grow by leaps and bounds. They've sold more Zenith Hearing Aids for us and made our business more successful on small-profit Zeniths than it could ever be by selling far less high-profit hearing aids. We feel proud of the fact we have helped you in your crusade to lower the cost of hearing.

Are we happy? Well, we're as happy as our Zenith-wearing customers. And that's plenty happy!

Sincerely yours,
WM. C. SMITH

VOTE 5-A

HELP WANTED

1954	TAX RATE	6.32
1950	TAX RATE	5.57
		INCREASE .75

WHERE IS THAT ADVERTISED TAX REDUCTION?

BELLEVILLE NEEDS

G O O D

R E S P O N S I B L E

U N C O R R U P T I B L E

H A R M O N I O U S

I M P R O V E D

N O T A B L E

TOWN GOVERNMENT

ELECT

ROBERT C. GRUHIN

COMMISSIONER

5-A

HEAR and SEE GRUHIN

GALA MASS MEETING AT BELLEVILLE ELKS CLUB

MAY 5TH - 8:30 P.M.

PRIZES ENTERTAINMENT FREE ADMISSION

5-A

5-A

Paid For By Gruhin Boosters

Farewell Party Fetes Couple Leaving Soon For Germany

By Regina Smaridge

Mrs. Thomas F. Dillon and her sister, Mrs. Timothy Malachuk, both of 116 Homewood Avenue, gave a cocktail party and buffet supper recently as a "farewell" for Mr. and Mrs. Daniel Byron, Jr., who are leaving to spend four years in Heidelberg, Germany. Mr. Byron, an engineer, had just returned from Japan where he was engaged in construction work. His parents, the Daniel Byrons, Sr., attended the gathering on Sunday and many friends and relatives dropped in to say good-bye.

Mr. Dillon has been busy these days. Next Wednesday she will entertain 250 guests at a tea in the Fox-Hills restaurant. The occasion will honor Gennine, daughter of Mrs. John S. Hyde, with neighbors and friends attending.

Congratulations to Mr. and Mrs. Anthony Brenza of 44 Belleville Avenue who celebrated their 25th wedding anniversary on Tuesday. The couple have eight children, namely: 17, Mary, 16, Rose, 14, Anthony Charles, 11, Constance, 10, Florence, 10, Joseph, 8 1/2, and Jimmy, 5.

Mr. and Mrs. Leslie T. Woodruff and their daughter, Helen, of 229 Joralemon Street are vacationing in the south and recently made a visit to the Little White House in Warm Springs, Ga., where President Roosevelt spent much of his time and where he died.

Mrs. Alan Lundy of 384 Stephens Street attended a dinner on Monday at the Pelester restaurant in Watchung. The dinner was given for the volunteer workers at Lyons hospital and more than 60 men and women were present.

Keeping a secret is difficult, but Mrs. Theresa Singer of 144 Liberty Avenue managed to keep one until her husband, Dr. John W. Singer, surprised her by giving her a surprise party at his birthday. The party was held at the home of his wife and her mother, and all the grandchildren were on hand to call out SURPRISE and help cut the cake.

Present were Mr. and Mrs. Robert Singer, Dr. Singer's parents, and their two children, Susan, 2 1/2, and Patricia, 3 months and Mrs. Frederick Singer, Jr., of 31 Chestnut Street and their daughter, Mary Margaret, aged 8 months. Mr. and Mrs. John J. Judson of 712 Joralemon Street dropped in later to join the fun.

Mr. and Mrs. Frank Molinari of 172 Malone Avenue entertained Mrs. Molinari's sister, Miss Mary Margaret Pitaro of Philadelphia, as a weekend guest. Attending the dinner party on Sunday, in honor of Mrs. Pitaro's recent arrival from the U.S. Navy Nurse Corps, where she had served for three years as Lieutenant, were her parents, Mr. and Mrs. Philip Pitaro of Wyoming, Pa., and another sister, Mrs. Josephine Ronchetti of New York.

Miss Alice Barton, daughter of Mr. and Mrs. Joseph Barton of 31 Clinton Street was seen in the audience enjoying the hit comedy "O Men O Women" this week. An after-theatre dinner with her escort topped off the evening's fun.

The following note, printed in its entirety, was received informing us of a new pennant threat.

"Mrs. Orlon's 4th grade at No. 3 school organized a baseball team. Monday we played the other 4th grade. Miss Smith's at Clearman Field. We lost. The score was 13 to 10. We are going to play Miss Smith's team."

The James Schleifers of 73 Prospect Place and their four children, Toni, Judy and Tom, drove down to Washington, D.C. over the weekend and stayed with friends. They attended the wedding of their niece, Miss Barbara Pope and took in some sightseeing while there.

a Royal gift for Mother

SUNDAY, MAY 2nd

SPECIALS

Ladies Nylon Half Slips White and Pink. Sizes: Small, Medium, Large. **1.99**

Nylon And Orlon Short Sleeve Slips. Spring Shades. Sizes: 34 To 40 **2.98**

Ladies Rayon Panties One For Each Day Of The Week. 7 Pairs In A Plastic Jewel Case With Lock And Key. Assorted Colors. Sizes: 5, 6, And 7. Reg. 5.95 Special **3.98**

All Wool And Orlon Shrugies. Large Selection Of Colors. Special **3.98**

16 Rib "Storm Hero" Umbrellas. Solid Colors And Plaids. Special **2.98**

Large Selection Of Ladies Aprons And Half Aprons. Also Xtra Sizes From **.98**

SHARGEL'S

DEPARTMENT STORE

480 Washington Ave. Near Little St.
PL 9-2931 Open Evenings We Deliver
"The Store of Personal Service"



Mrs. Frank Dalla Riva Mrs. Dante P. Mariani Mrs. Dominic Servidio

Three April Brides in Weekend Nuptials

The marriage of Miss Dorothy Jo Westlake to Frank Dalla Riva took place on Saturday in St. Peter's Church with a nuptial mass solemnized by the bride's cousin, Rev. Dr. Aloysius J. Walsh, of the Immaculate Conception in Darlington. The couple received the papal blessing. The bride is the daughter of Mr. and Mrs. John W. Westlake of 39 Dewitt Avenue and the groom is the son of Mr. and Mrs. John Dalla Riva of 149 Mountainview Avenue, Nutley.

The bride's gown was fashioned of nylon tulle and imported Chantilly lace over taffeta. Her double-tiered veil fell from a matching cap of lace and pearls. She carried white roses and orchids with a prayerbook.

Miss Joan Dalla Riva, sister of the groom, was maid of honor and the Misses Catherine Walsh of Newark and Janet Penketham of Belleville were bridesmaids.

The groom had as best man Joseph Kearney of Bloomfield and Joseph A. Davis and John Bruno ushered.

Mrs. Dalla Riva is a graduate of Belleville high school and is employed by the Prudential Insurance Company. Her husband, a graduate of Bloomfield high school, is in business with his father.

After a three week trip to Florida the couple will live at 15-D Belle View Court.

CARD PARTY FOR KENNETH D. SMITH

The Kenneth D. Smith Association will sponsor a card party on Friday evening, May 7, at 8 in the Elks Auditorium with Mrs. Catherine Burke as general chairlady, assisted by Mrs. Ruth Roy and dancing by the orchestra. Door prizes will be awarded by Carl Lombardi will follow.

ANNUAL HADASSAH CONVENTION SET

Six delegates from the Belleville-Nutley chapter of Hadassah will attend the 27th annual spring conference of the north Jersey region of Hadassah from Tuesday, May 4 through Thursday, May 6.

The convention will be held in the Berkeley-Carter hotel in Asbury Park and those who will represent the Belleville-Nutley chapter are: Mrs. Jerome B. Hamberger, president; Mrs. Sidney Rogosa, Mrs. Abe Weinstein, and Mrs. Herman Goldberg of Nutley, and Mrs. George Sabin of Belleville.

Mrs. Weissman, vice-president in charge of programming, has been requested to report on the many original affairs held during the year by the Belleville-Nutley chapter. Other members are planning to attend daily sessions of the conference.

The following have been elected: Mrs. John Seasholtz, secretary; Mrs. Alfred Wolf, vice-president; and Mrs. Ernest Arvidson, president.

During the meeting, the tape



Photo By Kondreck

MRS. TICE MARKS 25-YEAR SERVICE

Mrs. Florence E. Tice, of 8 Division Avenue, was honored today by her associates on her 25th anniversary with the Mutual Benefit Life Insurance Company of Newark.

A member of the building department, Mrs. Tice belongs to the Women's Club, the company organization of women with over 20 years' service and is also a member of the Pelican club.

Mrs. Tice is active in the Essex county V-F-W hospital tour which entertains in hospitals throughout the state. With this troupe she and her husband, Harry Tice, also with Mutual Benefit, perform a hillbilly song and dance routine.

ELIZABETH WEEKS WEDS GEORGE JUNG

In a ceremony on Saturday afternoon in Feenburgh United Methodist church, Mrs. Elizabeth Weeks was wed to Frederick Jung. The bride is the daughter of Bruno Roedel of 310 Greylock Parkway and the late Mrs. Roedel. The groom is the son of Mr. and Mrs. George Jung of 79 22nd Street, Irvington.

Dr. James K. Morse performed the ceremony and the bride was attended by Mrs. Ruth Knight, matron of honor, Joseph Calaga acted as best man and a reception followed in the home of the bride.

After a two week trip to Bermuda the couple will reside at 309 Greylock Parkway.

Miss Phyllis Dean, daughter of Mr. and Mrs. Laurence Dean of 53 Overlook Avenue, became the bride of Dominic Servidio, Saturday at a nuptial mass in St. Mary's church, Nutley. Mr. Servidio is the son of Mr. and Mrs. Pasquale Servidio of 148 Passaic Avenue, River Edge. The groom is a graduate of Belleville high school and employed by the Federal Radio and Telephone Corporation. Mr. Servidio is a veteran of the Korean war and employed by the Public Service Gas and Electric Company in Kearny.

The bride is a graduate of Belleville high school and employed by the Federal Radio and Telephone Corporation. Mr. Servidio is a veteran of the Korean war and employed by the Public Service Gas and Electric Company in Kearny.

The bride is a graduate of Belleville high school and employed by the Federal Radio and Telephone Corporation. Mr. Servidio is a veteran of the Korean war and employed by the Public Service Gas and Electric Company in Kearny.

The bride is a graduate of Belleville high school and employed by the Federal Radio and Telephone Corporation. Mr. Servidio is a veteran of the Korean war and employed by the Public Service Gas and Electric Company in Kearny.

The bride is a graduate of Belleville high school and employed by the Federal Radio and Telephone Corporation. Mr. Servidio is a veteran of the Korean war and employed by the Public Service Gas and Electric Company in Kearny.

The bride is a graduate of Belleville high school and employed by the Federal Radio and Telephone Corporation. Mr. Servidio is a veteran of the Korean war and employed by the Public Service Gas and Electric Company in Kearny.

The bride is a graduate of Belleville high school and employed by the Federal Radio and Telephone Corporation. Mr. Servidio is a veteran of the Korean war and employed by the Public Service Gas and Electric Company in Kearny.

The bride is a graduate of Belleville high school and employed by the Federal Radio and Telephone Corporation. Mr. Servidio is a veteran of the Korean war and employed by the Public Service Gas and Electric Company in Kearny.

The bride is a graduate of Belleville high school and employed by the Federal Radio and Telephone Corporation. Mr. Servidio is a veteran of the Korean war and employed by the Public Service Gas and Electric Company in Kearny.

The bride is a graduate of Belleville high school and employed by the Federal Radio and Telephone Corporation. Mr. Servidio is a veteran of the Korean war and employed by the Public Service Gas and Electric Company in Kearny.

Dolores M. Fierro Becomes Bride of Anthony Petroski

The wedding of Miss Dolores M. Fierro, daughter of Mr. and Mrs. John Fierro of 292 Laurel Avenue, Kearny, to Anthony Petroski, son of Mrs. Frank Petroski of 10 Van Rensselaer Street, and the late Mr. Petroski, took place Sunday in St. Stephen's Church. A reception was held in the home of the bride.

The bride wore a gown of bluish pink Chantilly lace and nylon tulle with a lace redouche. A French illusion veil was draped from a crown of sequins and she carried white roses.

The bride was attended by Miss Sara Gaccione as maid of honor with Mrs. Alfred Contestani, sister of the bride, and Miss Jacqueline Zukas as bridesmaids.

Frank Petroski was best man and ushers were John Petroski and Alfred Contestani.

Mrs. Petroski attended Kearny high school and is employed by the H. T. Machine Tool and Die Corporation. Her husband attended Belleville high school and is employed by the Anderson Trucking Company.

Kathleen Flynn is Wed at Solemn High Nuptial Mass

A solemn high nuptial mass in St. Peter's Church solemnized the marriage of Miss Kathleen F. Flynn to Joseph E. DeBolt on Saturday. The bride is the daughter of Mr. and Mrs. John J. Flynn of 118 Division Avenue and her husband is the son of Mr. and Mrs. Walter M. DeBolt of 115 Kingsland Road, Nutley. The nuptial mass was officiated by Rev. Walter A. DeBolt, brother of the groom, assisted by Rev. Aloysius Walsh of Immaculate Conception Seminary and Rev. Francis Ignazio of St. Peter's.

The bride's chapel length gown of nylon tulle was fashioned with a tucked bodice and portrait neckline of lace. Her French illusion veil was caught by a Queen Anne crown of seed pearls and orange blossoms. She carried an orchid and prayerbook.

Miss Kathleen Ann Flynn, sister of the bride, was maid of honor. Dressed in a ballerina gown of aqua shantung with a crown of pearls, she carried a nosegay of violets.

The bridesmaids wore similar ensembles and carried white roses and orchids. The bridesmaids were Misses Patricia Lister and Elizabeth Stuey.

Robert E. DeBolt served as best man and ushers were Michael Flynn, brother of the bride, and Walter Kelly.

The bride is a graduate of St. Benedict's Preparatory School and St. Peter's College in Jersey City. He is employed by the George LaMonte and Son Company in Nutley, and is a veteran of World War II.

After a reception in the American Legion Home, the couple left for their honeymoon in Florida. They will live at 111 Howard Place.

SCHUMANN-HEINK CLUB IN "CARMEN"

Mrs. Richard W. Howe of 25 Essex Street, president of the Schumann-Heink Club, announced that plans for the 24th annual concert of the club group have been completed. The concert will be held in the Mutual Benefit Insurance Company next Tuesday evening at 8:30.

The first half of the program will consist of selections by the 40 members of the club, a women's chorus. The second half will feature a concert version of Bizet's opera, "Carmen".

The chorus will be assisted in this production by a group of new singers. Leading roles will be taken by the following: Don Jones, Donald Gage, who is the club's conductor; Carmen, Lili Caputo, of Nutley, who is just completing her second year with the New York City Opera Company; Michala, Edith Jurewicz, of Escanaba, Martin Balaban, of America. Mrs. Connelly is also a democratic district leader in Belleville and a member of the Schurman Professional Women's Club.

For Your Photographic Needs Call Belleville's 1 Stop Studio

• Portraits
• Passports
• Photostats
• 3-D Color Slides
• Weddings
• Commercials

KONDRECK STUDIO
185 Stephen St., Belleville
Phone PL 9-2050

reorder, two phonograph players and records which were presented to the school by the P.T.A. from the profits of their Spring Carnival will be on display.

Robert Cook, recreation director, will address the group after the presentation of officers about the activities of his department and present a film. The mothers of the 3rd grade will be hostesses with Mrs. Pearl Richter as chairman of the hospitality committee.

Our CLASSIFIED SECTION BRINGS QUICK RESULTS TO ADVERTISERS

WESLEY METHODIST WELCOMES 40 NEW CHURCH MEMBERS

With the addition of 40 new members, received by Rev. Clifford A. Smith, pastor of the Wesley Methodist Church, the church reports a total of 112 new accessions to its membership for the current year. The pastor was greatly assisted in this remarkable evangelistic effort by the Commission on Membership and Evangelism of the local church. Headed by Ewan Richardson, chairman, the commission presented an extended evangelistic mission in November of last year which resulted in 65 new persons being brought into the church fellowship.

Those who were received at the more recent service included nineteen young people from the pastor's confirmation class. They were Thomas Anderson, Joyce Baldwin, Raymond Boxer, Jr., Janet Cole, Robert Crisp, James DeBoris, Patricia Eggleston, Flavetta Frable, Margaret Harris, Florence Keppel, Anne Kennedy, Eleanor Kwik, Barbara McMillen, Barbara Mueller, Joan Peck, Joanne Peck, Linda Phillips, Caroline Sprue, Esther Sprague and Elizabeth Ann Valentine.

In addition to members of the confirmation class the following adults were received: Mr. and Mrs. Richard A. Strong, Mr. and Mrs. George C. Baiden, Allan Crisp, Mrs. Lucy Kohn, Richard M. Lockwood, Mr. and Mrs. Sigmund Lockwood, Mrs. R. E. Morral, Mr. and Mrs. Raymond C. Nix, Mr. and Mrs. Peter Platto, Mrs. Joseph Phillips, Mr. and Mrs. Joseph Sanford, Mr. and Mrs. James Stivers.

The new members will be honored at an informal reception to be held in connection with the annual meeting of the Church next Tuesday.

Isadore Padula Voters' To Sponsor Card Party

A card party in honor of Isadore J. Padula will be held on Monday evening at 8 in the Elks' Club under the auspices of the Isadore Padula Voters' Association.

All games will be in play and many door prizes and table prizes will be given. Refreshments are planned, and tickets may be obtained for the affair from the headquarters, Plymouth 2-5443, or checked with Michael Rubino, treasurer, at 133 Washington Avenue.

MUSIC TO ENJOY ENDS SEASON WITH CONCERT PROGRAM

"Music to Enjoy" will celebrate its final season with presentation of its final concert for the spring season Friday evening, May 7, at 8:15 in the auditorium of No. 8 school, Miss Hazel Ellsworth of 275 Little Street and William Akers of 254 Little Street, who have been in this vicinity for their two-act programs, will appear with Alec Miller, tenor and Jean McGilvray, student pianist.

Selections from the works of Bach, Mendelssohn, Kreisler and Adinolfi will be played and admission to the concert is free. Tickets may be obtained by writing to "Music to Enjoy" at 275 Little Street, or by calling Mrs. Howard Holmes at PLy-mouth 9-7338.

Mr. Miller is a light opera singer, and has been known in this area for his work with the Nutley Oratorio Society.

LIONS CLUB HEARS PLAN TO PROMOTE BUSINESS BUILDUP

Launching what he called a "beat-the-recession" program, and naming it the "Belleville Plan," Sidney Hollander, president of the Four Ready Label Corporation, outlined ten points he said would implement the program in an address here before the Lions Club. Hollander asked the members of Belleville to organize into an economic action team inspiring the rest of the country to take similar steps, and called upon labor, industry, and the consumer "to work as a team stimulating business and employment."

These, he said, are the answers to the problem: Buy more in '54; sell more in '54; advertise more in '54; work harder in '54; pay better wages in '54; offer better prices in '54; extend seasonality in '54; improve your product in '54; give better service in '54; develop new markets in '54.

"We are a small business and sales—160,000 strong," Mr. Hollander said. "How we use our purchasing power is all-important. If each of us would buy more in '54 instead of postponing our purchases, business would improve, our factories and farms would continue to produce, and more jobs would be provided."

Gala Talent Revue Held In Bethany Lutheran

A Talent Revue will be presented May 7 and 8 at 8:30 p.m. in the social hall of Bethany Lutheran church. The production is under the direction of Mrs. Albert Miller, the choir leader.

The show will feature a pageant scene and the committee working on the revue includes Mrs. Harry Bowden, workshop; Mrs. Charles Lemp, scenery; Mrs. William Monks, Mrs. Albert Heimer, Mrs. Hugh L. Perci, Mrs. Nicholas Van Baten, Mrs. Charles Rohleder and Mrs. Alfred Schuldt, tickets.

Sears, Roebuck To Conduct "Sears Days" In Belleville

Employees of Sears, Roebuck and Co. in Belleville, N.J., in Washington Avenue, will hold their annual employee-planned and staged event starting today and through Saturday, May 8. It was announced today by Robert Lecky, assistant manager.

Known as "Sears Days," this event is considered one of the company's biggest yearly retail promotions. It offers hundreds of special merchandise items for the family and home, many of which have been purchased especially for the occasion.

"Following custom, manager D. A. Bailey has turned over the preparation and running of this sale to the members of his staff," Lecky explained. From the youngest worker to veterans with many years' service all employees of the Belleville Sears store are playing key roles in this year's "Sears Days."

Directing the planning activities is a committee of long-time employees known officially as the board of advisers. Selected because of their knowledge and ability, they represent a total of 40 years of merchandising experience with Sears.

PUMPS COLLAPSE, SEWAGE MAY BE DUMPED IN RIVER

Passaic Valley Commission Orders Urgent Repair Of Two Of Its Four Pumps

The Passaic Valley Sewerage Commission announced yesterday that because of a breakdown of two of the four main pumps in its Newark Bay pumping station it will be necessary to bypass the station and resume dumping

sewage into the Passaic River and Newark Bay, as was done before the station was built in 1924. Town officials expressed a fear that tidal waters will wash some of the sewage matter up stream as far as Belleville and Nutley.

Town Shares Cost
At a special meeting yesterday, the Passaic Valley Commission passed emergency legislation to speed repairs and replacements. Nutley previously had approved a \$2,100,000 bond issue for the modernization of the Newark Bay Plant which had also been approved by the State Legislature. Nutley is to be billed annually for its share of the cost of modernization.

The Commission was told by Seymour A. Lubetkin, chief engineer to the commission, that only two pumps in operation, it

will be necessary to bypass sewage into the river and bay. Each of the four old steam-driven pumps that have been in operation since the plant was constructed some 30 years ago, has a capacity of 100,000,000 gallons of sewage daily. During peak periods 300,000,000 gallons pass through the plant.

Lubetkin told the Commission that on April 3 the first of the pumps broke a shaft. The second breakdown occurred April 19. Temporary repairs were made on that pump but it continued to build

up excessive heat and further inspection indicated that it will require repairs that will take about a month.

Lubetkin said there is a constant threat that a third pump will be decommissioned at almost any time since it is old and worn.

On the basis of his recommendations, the commissioners authorized their consultants, Boston Child Engineering Associates, to draft plans and specifications for the second replacement.

BORROW

money for a Mortgage Loan at the Bloomfield Savings Bank.

Direct Reduction, F.H.A. and Veterans' (G.I.) Loans. Liberal terms and friendly, helpful service.

BLOOMFIELD SAVINGS BANK

11 BROAD STREET • 1296 BROAD STREET
BLOOMFIELD, NEW JERSEY
MEMBER FEDERAL DEPOSIT INSURANCE CORPORATION
New Jersey's Largest Suburban Bank

WE'LL BE OPEN NEXT WEEKEND
MAY 8-9
Basil's band concerts, thrill rides, games, refreshments. Free four-act circus, twice daily, May 15. Swimming pool, May 29.

OLYMPIC PARK

IRVINGTON - MAPLEWOOD
The Place for Fun

SEARS HARDWARE WEEK

ROEBUCK AND CO.

7TH ANNUAL NATIONAL

HARDWARE AND PRICES AT THEIR BEST

Here Are 8 Good Reasons Why You Save At Sears

QUALITY HAND TOOLS

BEST COMBINATION OF HIGH QUALITY AND LOW PRICES IN YEARS

Your choice	4.98 EACH
3-pc. Wrench Set	4.98
All-steel Tool Box	4.98
Hand Saw, 26x8 Pt.	4.98
Hand Saw, 26x10 Pt.	4.98
Hand Saw, 26x15 Pt.	4.98
Craftsman Miter Box	4.98
Craftsman Plane	4.98
Drill Grinding Attachment	4.98

20 HAND TOOLS

VALUES TO 1.50

Your choice 98¢ EACH

13 QUALITY TOOLS

Your choice 2.98 EACH

Choose from 20 special hand tools... all really useful... practical tools you need and want for your home and workshop! There are levels, drill sets, squares, wrench sets, hand drills, screwdrivers, socket sets, pliers, screw and bolt assortments, tool holders, padlocks, 10-ft. tapes, miter boxes, wrecking bars... and other values up to 1.50.

Stock up today on these top quality Craftsman and Dunlap hand tools... price-slashed for this sale only! Come on in and look 'em over... you'll find 26-inch hand saws with 8, 10 or 14 inch points; 21-piece socket sets; 5-piece miter bits; 50-ft. tapes; 6-piece wrench sets; box, bits, squares, planes, vises, whiz-bits. Stock up and save today!

SEARS BELLEVILLE STORE

Hours 9 46 5:30
FRIDAYS
Till 9 P. M.

165 WASHINGTON AVE. BELLEVILLE, N. J.
FREE PARKING

Tel. PL 9-1011-2

SUPPLEMENT NINE Golden Comments



Well, Neighbor! With this old town still throbbing and talking about those Grand Jury indictments and proceedings, there can be no doubt in the minds of us neighbors as to the need of giving serious thought to the task of cleaning up the debris which has been left by this sensational political cyclone which has undermined the confidence of the people in their town governing authority.

Left with misgivings, doubt and fear as to the sanctity and stability of the very foundation of our community — our town governing authority: We must search among our midst for men who are sufficiently qualified and capable of "rooting out" any semblance of injustice, and who will be sufficiently qualified to meet the exacting requirements which public office demands.

Neighbor, for some weeks now I've been entering your home through this column chattering with you about the disgraceful town administration mismanagement and suggesting that you support my candidacy for town commissioner. I've entered this race as the result of deliberate consideration based upon my knowledge of the compelling need for honest, capable men of integrity on our town Board of Commissioners. I, who have breathed the storm of disdain and contempt which characterized the attitude of most of the present Commissioners toward a crusade to bring you people good, decent and efficient government, have made what is perhaps the greatest possible contribution to correct the abuses which have burdened our community for many years. That contribution has been the recent probe of the Prosecutor's office into the operating departments of the town and the resultant indictments occasioned by this investigation.

The sun shone brightly that late summer morning of Sept. 29, 1953, when, in response to a personal friend who joined in a previously arranged conference with County Investigator Anthony Sherman at the Essex County Prosecutor's office and presented another of my salient points in the following complaint:

"This complaint is filed with the expressed understanding that audit public records tend to indicate the existence of anomalous irregularities in the administration of the municipal affairs of the Town of Belleville, County of Essex, State of New Jersey."

"The impression may easily be arrived at from perusal of these reports that improprieties have been perpetrated in contravention of existing statutory law, such perpetration is admitted being covered by the statute of limitations and which if established should prove indelible."

"It is the conviction of the complainant that diligent investigation of the properly designated authorities of the County appropriately, exercising the prosecutorial authority vested in their office may well establish the existence of a possible unlawful conspiracy or at least a betrayal of an attempt to circumvent the law by tergiversation and subterfuge."

"Recommendation is made and requested that full and comprehensive investigation be

conducted upon the part of the office of the Prosecutor of the County of Essex in the State of New Jersey, to seek out any and all evidence of palpable and tactile violations of the spirit and the letter of the law, as might be applicable to the enumerations set forth in this complaint, which if corroborated should result in the invoking of appropriate punitive action against any and all persons, irrespective of their official or community positions, who might in the opinion of the Prosecutor have knowingly and wilfully become a party to such malversations."

It was I, your neighbor, James R. Golden, who prepared and signed that complaint which set off the cataclysmic chain reaction which has rocked our town. What I'd like to leave on record to me is why the present Commissioners and especially Mayor Tully did not immediately act to prevent the continuance of a condition which he has acknowledged in the public press he was aware of.

If Mayor Tully was suspicious of the propriety of the conduct of business practices of any of the members of the Board of Commissioners, why did he not promptly call a meeting of the Board citing any questioned or irregular conduct? Why did he, in spite of his own apparent suspicions, still continue to vote to pass on the vouchers which obligated the town to pay for these improper transactions? Why did Mayor Tully, as titular leader and head of the community and its governing body, not refer these matters to the Prosecutor's office? Does Mayor Tully not realize that there was a time interval of 14 months between the time he first indicated his noticing suspicions in the purchasing practices he was having examined and the date of the annual audit release which even then, while alluding to evidences of violations of the public bidding laws, did not enumerate them, but only remarked would be cited in a budget supplement. The town needlessly paying for these irregular expenses during this period.

Neighbor, it was this budget supplement which occasioned my trip to our State Capitol, Trenton, Oct. 2, 1953. Where I received assurance from Hon. George C. Skillman, head of the Division of Local Government, that he regarded the supplement an integral and complete part of the audit and a public record, he stated, "while precedent exists for such supplements, it is an uncommon practice." Why was a supplement needed? Why did the supplement suggest that the questioned purchases be referred to the town attorney, who is appointed by the Commissioners, for legal review? It was I who insisted that all the records be turned over to the Prosecutor because I questioned the propriety of having Mr. Keenan, the Town Counsel rule on so vital a matter concerning the actions of those by whom he was appointed. When Mayor Tully continued to supplement he neglected to add that the law requires that an audit be made each year by a registered municipal accountant who is required by law to cite any and all irregularities found or discovered in his audit and if he is obliged to do without the suggestion of anyone, that is his duty.

This has been a little long neighbor, but I want you to know all the facts. I hope this article has cleared your mind of any confusion in regards to this bombshell which has hit Belleville with such an impact. I'll be seeing you next week in the Times-News.

Your neighbor,
James R. Golden.

Paid For by James R. Golden

WE SHOULD RE-ELECT JAMES J. TULLY COMMISSIONER

BECAUSE . . .

Last Monday I attended a Luncheon at the For-Hills Restaurant in honor of Mayor Tully. He addressed approximately four hundred women of Belleville who were present.

He spoke with a sense of conviction that comes only when a person speaks the truth.

Not only shall I vote for him, but I shall vote for him also. I want to make sure that he is returned to the place of leadership in our Community where he so rightfully belongs.

Mrs. Mary Garbely
95 Union Avenue
Belleville, N. J.

PADULA SAYS:

"The Essex County Board of Freeholders could not be serious in their suggestion that a committee of Belleville residents search out a suitable location for the Parent Home in another municipality. What authority would they have to do this? It is the job of the Freeholders to do their own searching for their properties in other municipalities. It should be enough that the taxpayers in the Belleville area do not want the home there. They are not obligated to do the work of a reluctant Board in its delaying tactics. More power to the citizens who have set out to defeat this invasion of thy authority."

Mrs. Mary Garbely
95 Union Avenue
Belleville, N. J.

VOTE 1-A

ISADORE J. PADULA
Commissioner

Paid for by A. Weber

VOTE 3a

Paid for by James R. Golden

50 TO TAKE PART IN ST. PETER'S C. Y. O. MEET

Martin Maloney, president of the adult council of St. Peter's C. Y. O., announced that the organization's fourth annual track meet will be held May 22 at the Municipal Stadium. This year the committee expects to have 500 boys and girls taking part in the various events, which include dashes, relays, potato sack races, and obstacle races.

Maloney will also seek sanction for A. U. events at the meet. Last year, the C. Y. O. had three such events — such as the 440 yard run, the half-mile run, and the mile run.

Members of the committee in charge are: Gilbert Howley, George Mahler, Masty Mallock and Fred Scheuerman. Aiding in arrangements for the girls' events are Marion Malcolm and Helen Kuhn.

Youngster-Alden Plans Popular Buffet-Dance

Bill Strausburger and his popular orchestra, the Weckermans, will be on hand Saturday evening for another of Youngster-Alden's social get-togethers. Doors of the post home at 17 Belleville Avenue will be open from 8:30 on and tickets may be purchased at \$1.50 each.

Dancing and refreshments will highlight the evening's entertainment and all members are urged to attend and bring along their friends.

Mrs. Matts Guests Tully At Recent Coffee-Brunch

Mrs. Mae Matts of 155 Breunig Street was hostess to a group of friends and neighbors at a coffee brunch recently and Mayor James Tully was guest of honor. He discussed some interesting aspects of the coming election.

A similar brunch will be held Saturday morning at Mrs. Matts' home in honor of Safety Director Harry Sullivan.

CHURCHWOMEN TO HOLD FELLOWSHIP LUNCHEON FRIDAY

Fewsmith Memorial Presbyterian church will be host to ten churches at the May Fellowship Luncheon sponsored by the Belleville Council of Churchwomen on Friday afternoon, May 7, at 12:30.

Mrs. Charles Noll, general chairman, has announced that the theme of the program will be "The Christian Woman's Trustworthiness."

Dr. James K. Morse is pastor of the church.

Warren Tweedy, chairman of the New Jersey Synod Presbyterian Council of Social Education and Action has been engaged as guest speaker and a play entitled "Shoppers for Abundance" will be presented under the direction of Mrs. James Morse. The following cast will take part:

Mrs. Lorena Clark, Mrs. Claude Freid, Mrs. Lawton Cox, Rev. T. Painter Hanson and Rev. Morse. Representatives from the following churches will attend the luncheon: Christ Episcopal, Second Baptist, Grace Baptist, Italian Baptist, Montgomery Presbyterian, Dutch Reformed, Wesley Methodist, Bethany Lutheran and the Little Zion church.

Mrs. Rudolph Lueths, president of the Council of Churchwomen, met with the executive committee recently to complete plans for the luncheon. Attending this meeting were Mrs. Noll, Mrs. Edward Roebach, Mrs. William Maser, Mrs. George Newman, Mrs. Edward Vogel and Mrs. Morse.

3 Cited For Safe Driving In Recent N. Y. Contest

Three Belleville men, James Blaherty of 10 Carpenter, Terrace, James Gallagher of 274 Greylock Parkway and Francis Wehmann of 206 Division Avenue, received awards for safe driving in the Greater New York Fleet Safety contest this week.

The men are truck drivers for the S. B. Thomas Company, Inc., bakery distributors, and their perfect safety records were achieved despite the heavy traffic and hazardous weather which they encounter in their daily rounds.

LETTERS To The Editor

"Playgrounds, Not Jails"

To The Editor, The Times-News:

Your editorial in the April 2 issue of the Times-News, "No Time Or Place For Prison," leads me to ask why the people of Essex County are so worried about the teenagers? Why don't the people do something to help the teens instead of making criminals out of them? Prisons or reformatories only make the situation worse. Instead of doing that, why not build free camps, motorcycle tracks, playgrounds, indoor swimming pools, etc. That's what the youngsters need, not jails.

If they ever do build a Parental Home in Belleville, this is one service man who will move out of Essex County.

I was a scout leader, and know that the teens aren't bad. They

all love the outdoor life, and I did, too.

If you want to help the teenagers, let's spend the money in a way that will do some good, instead of building parental homes.

Paul Santinelli
Limestone Air Force Base
Limestone, Maine

OUR CLASSIFIED SECTION
BRINGS QUICK RESULTS
TO ADVERTISERS

NOW You, Too, Can Own An Original Painting At Your Own Price!!!

PUBLIC AUCTION

Original Paintings And Objects D'Art
Held By The
ASSOCIATED BELLEVILLE ARTISTS
at
YUDINS PAINT STORE
144 Washington Ave. Belleville, N. J.
TONIGHT, APRIL 30th 8:00 P. M.

Columbus Hospital Spring Dance

Mrs. Alfred T. Storza, of Glen Ridge, is chairman of the annual spring dinner dance to be given by the Woman's Auxiliary of the Columbus Hospital, on Saturday evening, at the Essex House Elizabeth Room, in Newark.

Isadore J. Padula



PADULA SAYS:

"During this campaign I have heard myself referred to as an 'Amateur politician'. I have looked the field over on all levels of government and find those who have been playing at politics for years pretty amateurish at putting to practical use the scientific principles of politics. Some have even taken post graduate work in Character Assassination, but they are still second-rate in performance."

**VOTE 1-A
ISADORE J.
PADULA
Commissioner**

Paid for by R. Caporaso

**WE SHOULD
RE-ELECT
JAMES J. TULLY
COMMISSIONER**

BECAUSE - -

He is a long time resident of Belleville. He rose from the ranks of private and received a battlefield commission on Iwo Jima.

He again answered the call to active duty during the Korean Conflict.

The way some revengeful politicians are trying to slander him is a disgrace.

Charles W. Holloway
284 Jerusalem Street
Belleville, N. J.

Independent

Candidate

**Able
Educated
Decisive
Efficient
Dependable**

VOTE 12-A

FOR COMMISSIONER

EDWARD G. SMITH

Sincere - Honest - Courageous

**Business Executive for 33 Years
Taxpayer in Belleville for 30 Years
Graduate of High School with Honors
Graduate of Ridgeway Normal School
Graduate of Penn State College**

VOTE 12-A

Mr. SMITH'S only campaign pledge - To preserve with dignity, honesty and unflinching faith, the great destiny of the Town of Belleville; to be the servant, not master, of his neighbors, the VOTERS.

12-A EDWARD G. SMITH 12-A

**CLEAN-UP WEEKS - -
APRIL 26th TO MAY 8th INCLUSIVE**

CITIZENS OF BELLEVILLE:

May we count on your co-operation and assistance to make Belleville better, brighter, cleaner and more beautiful? You can do it by giving the cellar attic and yard a Spring cleaning. CLEAN-UP WEEK is your chance to get rid of the useless trash and rubbish.

Place rubbish and trash in containers on the curbline and extra wagons will be furnished to remove it.

In case of illness or invalidism rubbish or trash placed outside of your door or in your yard will be picked up. Just call the Health Department, PL 9-2832, in such cases.

CLEAN - UP WEEK WILL RESULT IN MANY ADVANTAGES TO COMMUNITY LIFE!

In Safeguarding Health In Furthering Fire Prevention
In Promoting Cleanliness In Stimulating Civic Pride, and
In Making the Home and Town Beautiful

DEPARTMENT OF PUBLIC AFFAIRS

JOSEPH KING, Commissioner
EUGENE T. BERRY, Health Officer

ELECTION NOTICE

TOWN OF BELLEVILLE, N. J., GENERAL MUNICIPAL ELECTION, MAY 11th, 1954

Petitions have been filed with the Town Clerk of Belleville, N. J.: FOR the election of FIVE TOWN COMMISSIONERS: FOR the question "Shall a charter commission be elected to study the Charter of Belleville, N. J., and to consider a new charter and to make recommendations thereon?" - FOR the election of FIVE CHARTER COMMISSIONERS and for the question "Shall the Members of the Board of Education of the Belleville School District be elected hereafter?"

VOTE ON THE QUESTIONS - VOTE FOR FIVE TOWN COMMISSIONERS; and VOTE FOR FIVE CHARTER COMMISSIONERS.

YES		NO																
<p>"Shall a charter commission be elected to study the charter of the Town of Belleville, in the County of Essex, and to consider a new charter or improvements in the present charter and to make recommendations thereon?" WHETHER YOU VOTE YES OR NO ON THE QUESTION YOU SHOULD VOTE FOR 5 OF THE CANDIDATES FOR THE CHARTER COMMISSION.</p>																		
<p>YES NO</p>																		
<p>SHALL THE MEMBERS OF THE BOARD OF EDUCATION OF THE BELLEVILLE SCHOOL DISTRICT BE ELECTED HERE-AFTER?</p>																		
Municipal Election		TOWN COMMISSIONERS - BELLEVILLE, N. J. Vote for Five																
May 11th, 1954		FOR CHARTER COMMISSION Vote for Five																
1A	2A	3A	4A	5A	6A	7A	8A	9A	10A	11A	12A	13A	14A	15A	16A	17A	18A	
Isadore J. Padula	Michael V. James	Kenneth D. Robert	Louis A. Gruhn	Harry J. Noll	Joseph King	James R. Heller	Anthony J. Edward G. Elmer S. Hyde	James R. Golden	Griffin Brienza	Smith	Hyde							
A		B		C		D		E		F		G		H		I		J
1C		2C		3C		4C		5C		6C		7C		8C		9C		10C
John J. Gibbons		Boyd A. Hartley		Raymond O. Smith		James V. Galioto		Lenora B. Willette										

Official Ballot Attest:
Shirley R. Mosey
Town Clerk

POLLS OPEN FROM 7 A.M. to 8 P.M. (Daylight Saving Time)

EXPLAINS CHARTER STUDY AS REVIEW OF GOV'T. FORM

This is another in a series of articles relating to the proposal for a Charter Study, and election of a Charter Study Commission, which will be included on the May 11 ballot. The author is a candidate for the Charter Commission.

By Boyd Hartley

There seems to be a great deal of misunderstanding concerning Charter Study. Some people have asked, "What do you mean by Charter Study? What does it involve?" The best way to describe any process is to begin at the beginning and explain all the steps.

In 1947 a new State Constitution was adopted to replace the badly outmoded Constitution originally adopted in 1844. The state legislature felt that any municipalities saddled with obsolete forms of municipal government

should have an opportunity to review and change such governments if desired. In 1948 a state Commission on Municipal Government was created to study the forms of such government in New Jersey and to make recommendations for improvement. From the deliberations of this commission came the Optional Municipal Charter Law of 1950, popularly known as the Faulkner Act. The policy underlying these efforts was to foster local initiative in the revision of municipal charters.

By the election of a charter commission, the citizens may study their form of government and may recommend either the adoption of one of the optional plans, retention of the existing form or adoption of a special form more suitable to local needs. Now, let's consider the mechanics of Charter Study.

The first step is to determine if the voters want a Charter Study. In Belleville, at the request of the Belleville Committee for Young Men in Government, the present Board of Commissioners voted unanimously to put the question on the ballot of the May 11 municipal election.

The second step is the election of the Charter Commission of five members. When voting on May 11, you should also vote for charter commissioners. These are not the candidates for the town commission but are separately listed on the ballot.

Fine; now we have voted for a Charter Study and elected charter commissioners. What do they do?

The duties of the commission are set forth in the Optional Municipal Charter Law:

It shall be the function and duty of the charter commission to study the form of government of the municipality, to compare it with other available forms under the laws of this State, to determine whether or not in its judgment the government of the municipality could be strengthened, made more clearly responsive or more economical or efficient, under a changed form of government.

In order to accomplish this and to determine the will of the people, the commission is required to hold public hearings; it may hold private meetings and sponsor public meetings and forums. In general, the commission must provide the widest possible public information and discussion respecting the purposes and progress of its work.

It should be understood by everyone that the commission is not an investigative body; it is confined to the form of government and has no authority to look for illegal practices on the part of any municipal officials.

The next question is, "How much will Charter Study cost?" It is extremely difficult to predict costs because there are so many variables. The cost per person in Belleville should be nominal and probably will be measured in pennies. The commissioners receive no salary for their work. A secretary must be hired or otherwise provided; possibly a present town employee can be loaned for this purpose. It may be necessary to hire a consultant on a fee basis for advice on some technical matters. By far the biggest single item on expense is printing and distributing the final report and recommendations of the commission.

However, there is one very important safeguard to prevent high cost. The necessary fund must be provided by the Town Board of Commissioners and they will naturally watch carefully all expenditures.

After completion of the survey and determination and evaluation of the desires of the citizens, the report of the commission is issued. This, by law, must be within 90 days of the May 11 election. The commission must recommend one of the alternatives mentioned in the third paragraph of this article; in short, a recommended municipal charter.

The final step is again determination of the will of the voters. A referendum must be held on the recommended charter. The question of adoption or rejection will be put on the ballot of the next general or regular municipal election at least 60 days after publication of the report or at a special

FUND DRIVE HERE FOR Y. M. C. A. IN MONTCLAIR

To meet an operational deficit in the Montclair Y. M. C. A., of which more than 100 Belleville youths are members, a fund drive was launched here yesterday under the direction of Richard Corner, 203 Branch Brook Drive. He is

election between 60 and 120 days after such publication. If the recommendation was for a change in government and the citizens voted in favor of the change, the law provides definite times for election of the new officials and for their installation in office.

A negative vote on May 11 means that the question of Charter Study cannot be raised again for 5 years. Also, any new form of government adopted can be changed through a Charter Study initiated 5 years after its adoption if it should be unsatisfactory.

Isadore J. Padula



PADULA SAYS:

"The constant cross-fire of indefinite purposes in recent weeks lends more strength to the fact that legal thinking is needed in our Commission personnel."

VOTE 1-A

ISADORE J. PADULA
Commissioner

Paid for by A. Weber

New York district sales manager for G. O. Carlson, Inc., and a member of the Montgomery Presbyterian Church congregation.

The drive was preceded Wednesday night by a kick-off dinner at the Y. M. C. A. general chairman is Norris H. Evans of Montclair.

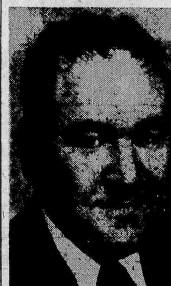
Conners said the deficit arises from the fact that though 1,992, or 20 per cent of the Y. M. C. A.'s total membership of 6,641, comes from communities other than Montclair, these communities contributed only eight per cent toward meeting this deficit last year.

Stressing the importance of Belleville's part in the campaign, Evans declared that "the lack of donations here to the Y. M. C. A. has been a fact for a long time. Since the Y. M. C. A. last year

OUR CLASSIFIED SECTION

BRINGS QUICK RESULTS

Vote 7-A on
11th of May



Harry J. Sullivan

"For Safety"

"Harry Sullivan has proved himself a man of outstanding character, devoted to the interests of all citizens of our community. His interest in the children of our community proven by his great devotion to the work of the Police Athletic League merits the support of every Belleville parent."

Paid for by Bridie Lowack, Marion Malcolm & Winnie Pustenstien

was incorporated into the Montclair Community Chest, the financial set-up now makes it necessary that the "Y" obtain additional funds from adjacent communities. More donations from Belleville, will increase the possibility of extension work being done here.

"Among the facilities provided for members are day camps, clubs, participation in regularly organized classes and group activities, tunity to play basketball in the swimming lessons, and the oppob. Church Athletic Federation."

FACTS ABOUT

MICHAEL V.

Albertine



WE SHOULD
RE-ELECT
JAMES J. TULLY
COMMISSIONER

BECAUSE . .

It takes honesty, common sense, courage and a sense of responsibility to the people to make a good public servant. Beware of candidates with empty promises which are impossible of fulfillment; shun those who malign and slander; avoid the opportunists and the unqualified who are politically ambitious.

Where were these civic minded citizens in the intervening four years?

Good public service is an all time job. Holding public office is a sacred trust. James J. Tully has earned this right and should be returned to office.

John P. Maher
66 High Street
Belleville, N. J.

vote 3a

- A native of Belleville — has lived here his entire life.
- Graduate of Moravian College and Theological Seminary.
- High School Instructor at Bethlehem, Pa., and Bloomfield, N. J.
- Served in A. A. F. for three years in Southwest Pacific.
- Member of Veterans of Foreign Wars.
- Member of American Veterans of World War II.
- Member of St. Anthony's Field Club.
- Attended Rutgers Law School.
- Presently heads Michael V. Albertine Insurance Agency.
- Married and has two children, Margaret and Michael, Jr.

ELECT ALBERTINE

VOTE 2A

Paid For By Elsie Albertine, Camp, Mer.

ELECT



ANTHONY J.

BRIENZA

VOTE 11-A

Paid for by Anthony J. Brienza

Get The Facts!

About

Belleville's Charter Study

- CIVIC GROUPS
- NEIGHBORHOOD GROUPS
- POLITICAL GROUPS

Belleville's Committee For Young Men in Government has speakers:

Contact: Edgar Kellert, 161 Birch St., Belleville

RE-ELECT JOSEPH KING COMMISSIONER

ON HIS RECORD OF 20 YEARS OF HONEST SERVICE

THERE IS NO SUBSTITUTE FOR EXPERIENCE,
EFFICIENCY AND ECONOMY IN GOVERNMENT!

RE-ELECT JOSEPH KING!

Vote 8-A On Election Day - May 11th



Paid For By James L. Davidson

Paid For By Women For Better Government

Times Classified Advertisements

To Sell, Buy or Trade Telephone Plymouth 9-3200

Aluminum Windows
ALUMINUM TRIPLE-CHAMBER COMBINATION WINDOWS, manufactured by GEMERAL BRONZE CORPORATION, finest ever, compare and be convinced, no obligation. Telephone: Saturday, Fred Klein, Nulley 2-2078.

SELL-YOURSELF
Aluminum Storm Windows
Aluminum Storm Doors
Roofing and Siding
Over all day Monday, Wednesday and Friday evenings till 9 p.m.
166 Franklin Ave. Nulley 8-1000
15-1544

SALE 20% OFF 3 and 2 track windows and doors. SERV-U-SALES Co., Nulley 2-9240, 4-1664.

Asphalt Driveways
GABRIELE BROTHERS, asphalt driveways, parking lots, power rolled, fully insured. Excavating, 17 East Center St., Nulley, Call Nulley 2-4070.

ASPHALT DRIVES—PARKING AREAS, Masonry—Custom built garages, free estimates, work guaranteed. Consolidated Asphalt Const. Co., 139 Bloomfield Ave., Call Nulley 2-5047—2-0221.

ASPHALT DRIVEWAYS
SAMUEL GABRIELE & CO., Paving Contractors; sidewalks and parking lots. All work guaranteed. 64 East Center St., Nulley Nulley 2-0526.

J. FERRARO AND R. CUOZZO
Parking lots, pavement driveways, concrete work. Trojan Asphalt Co. Nulley 2-6953.

Carpenters & Builders
COMPLETE HOME MAINTENANCE; also alterations and repairs jobs. Concrete mixer for Louis Scatrina, 148 Passaic Avenue, Telephone Plymouth 9-9012.

TILE BLOCK CEILINGS
INSTALLED, reasonable. Call PL 9-0823.

ALTERATIONS OR REPAIRS
including ceilings, roofs, gutters, garages, porches, enclosed 30 years experience; estimates reasonable prices. Ben Robbins, 17 So. Walnut St., PL 9-1316.

CARPENTER CONTRACTOR
Specializing in alterations, doors, kitchens, garages, etc. All work done with precision tools. For better work at reasonable prices call Fred Baber, PL 9-1916.

ALTERATION, HOME REMODELING
will repair and modernize your home from basement to attic. Financing arranged. Call PL 9-2515 day or night; free estimates. Frank Cavallaro.

CARPENTRY & MASONRY
IN ALL ITS BRANCHES; porches, garages, additions, plastering, brick stoves, concrete walls, etc. Estimates on request. George V. Oliver, 78 Nulley Ave., Nulley, N. J. 2-3332.

Decorators & Painters
CARL BALZER, Jr., 189 Holmes St., painting and paperhanging, free estimates. Call PL 9-5018.

JOSEPH LUCIANO, CONTRACTOR
will do all home workmanlike estimates cheerfully given. Nulley 2-4195.

Electricians
COMPLETE ELECTRICAL SERVICE, commercial, industrial, residential. Outlets, switches installed. Essex Electric Co. PL 9-1919 or PL 9-1880.

Excavating
VOCATURO, excavating, landscaping, topsoil, stumps, unexcavated and clearing. A. Vocaturo, 46 Berton Place, Nulley, Call Nulley 2-7479 or Plymouth 9-8640.

Floor Covering
RUGS—Wall to wall carpet. Linoleum, tiles. Summer rugs. Meads-Miller Company, 143 Franklin Avenue, telephone 2-2534.

For Rent
COMFORTABLE BED ROOM, for business man. Good closet, High School section, near all buses. Reference exchanged. Call PL 9-3407.

NICELY FURNISHED FRONT ROOM
rent to bath, for business man. Buses pass door; no roomers. PL 9-2187.

SEASHORE, Shipboard, N.J.
rent from owner and save! Cottage, \$55, weekly apt. \$39, lower apt. \$32, weekly rates. Open to night. Day bathing 5 minute walk, ocean bathing 8 minute walk. Call Plymouth 9-7031.

TWO FURNISHED ROOMS
bath, in basement. Convenient to all buses. Call Plymouth 9-5294 after 10 a.m.

FOUR ROOMS, modern apartment, bath and kitchen, heat and hot water—supplied. \$35 monthly. Ready May 1st or 15th. Call Plymouth 9-5234.

FURNISHED ROOM, near all transportation. Call after 7 p.m. PL 9-7182.

GARAGE, 162 Hornbower Ave., Belleville, Call PL 9-4921.

Lost
NEW FIDELITY'S BASEBALL GLOVE, made by Franklin G. O'Neil, Wednesday, April 21st, between 12:30 and 2 p.m. at City Field. Reward. Call PL 9-3494.

SAVINGS PASSBOOK No. 64066
DeWitt Savings & Loan Association, 280 Washington Avenue, Belleville, N. J. Finder please return to above address.

SAVINGS PASSBOOK No. 42644
Fidelity Union Trust Company, Belleville office, Belleville, N. J. Finder please return to bank.

Mason Contractors
D'ARC & DEVITO, 217 Fairway Ave., Belleville, N. J., specializing in garages, sidewalks, brick stoops, patios, glass blocks, etc. All work guaranteed. Plymouth 94952 or Humboldt 3-0909.

Mattresses
CUSTOM MATTRESS MAKERS, complete line of bedding. Mattresses made to order. Retaining same day service. Buy direct and save. Maple furniture, floor covering, linens, etc. Call Nulley 2-0764.

Property Improvement
NEW SIDEWALKS and repaving. New lawns and repair. All labor, concrete and trucking. N. Sampaio, 79 Carner Ave., Belleville, N. J. PL 9-5859.

Roofers
IF YOUR ROOF LEAKS call HAROLD HARRISON, roof expert; leaders and gutters installed; all kinds of roof repairs, chimney repairs and slide repairs. 915 Chestnut Street, Kearny or telephone Kearny 2-5497.

ROOFING CONTRACTOR
all work done by owner, Asphalt roofing our specialty. Also siding, painting and oiling. From the factory, all work guaranteed. George Francoeur, 182 Forest St. PL 9-1873.

Rug Cleaning
RUG CLEANING, repairing and storage. Furniture and wall to wall carpet cleaned in your home. Meads-Miller Company, telephone Nulley 2-4305.

Tile Contractors
ALTERATIONS and repairs specialty H. H. Moorhouse tile and marble contractor, MacDonald Drive, Frankness, N. J. Phone Mountain View 2-2553.

Trucking
MOVING and all kinds of trucking. Michael Conover, telephone Plymouth 9-5839, if no answer call after 6 P. M.

Upholstering
REUPHOLSTERING done by experts. Wide variety of samples. Meads-Miller Company, telephone Nulley 2-4305.

Wanted To Buy
TOWING FREE! Highest prices paid for cars and trucks for wrecking. Philco Auto Wrecking Co., 34 Stover Avenue, Kearny. For immediate pickup call Kearny 2-2525; after 5 p.m. call Bigelow 2-7450.

ATTENTION, We pick up old magazines, newspapers, or we pay 40¢ per 100 lbs. if you deliver to us. Also pick up rags, tin cans, metal, batteries, etc. Resciniti, 42-44 Clinton Street, Belleville. Telephone PL 9-4408.

TURN YOUR ATTENTION INTO CASH. We buy old gold, silver, china, silver, gold, furniture and picture frames. Anything in the antique line. Box 239, Belleville Times.

Wanted To Rent
TWO ADULTS, 2 children (10 & 18 yrs) want to rent one family house in Belleville. Write Belleville Times, Box 241.

YOUNG COUPLE, expecting first child, desire 3 or 4 room apt. rent, \$60. Call Kearny 2-7097.

Work Wanted
ODD JOBS DONE, rubbish and dirt removed; cellars and yards cleaned. Dump truck to hire. Nulley 2-2525 5 p.m. to 10:30 p.m.

CHILDREN'S DRESSES made to order by experienced dressmaker. Call between 10 and 12 a.m. or 5 & 6 p.m. PL 9-1928.

RELIABLE WOMAN, to do part time housework. Write Box 240, Belleville Times, Belleville.

ALTERATIONS on ladies suits, dresses, etc. Call PL 9-9022, Miss Patricia, 217 Greyclark Parkway, Belleville.

ODD JOBS DONE, very reasonable. Call PL 9-7646 anytime.

STORM SASH TAKEN DOWN, screens put up! will paint. Window cleaning, reasonable. Call Plymouth 9-9469.

RELIABLE WOMAN, to do day's work or baby sit evenings. References. PL 9-2885 after 5:30 p.m.

RELIABLE WOMAN wishes to have for child her own washing machine and furnace. Immediate pickup. Telephone Nulley 2-3768.

NEW ESSEX INDEX ADDED TO LIBRARY
Miss Mary Stanier, director of the Belleville Public Library, has announced the addition of a new special index, the Essex Index, to the library's collection. This index, which is a compilation of the 18 public libraries in Essex county, will facilitate reference work, school studies or general information required by the people in Belleville. The index, which is published annually, and time you can learn by telephone the location and date of the special magazine you want to consult. If you own library, you will have all the information related on the telephone.

Miss Stanier also announced that 120 new numbers were welcomed in 1953 and a total of 65,654 books circulated during that year. A new reference book, the "Index to the Index," and Moody's Manual of Investments have been recent additions to the library.

LEGAL NOTICE
Giles, N. 1939
REPORT OF CONDITION OF THIS TRUST COMPANY
of Belleville, in the State of New Jersey, at a meeting of the Board of Directors, held on April 29, 1954, published in response to a call made by the Board of Directors, under Section 21 of the N. J. Revised Statutes.

1. Cash, including with other funds, \$1,000,000.00
2. In process of collection, \$5,360,000.00
3. Accounts receivable, \$2,000,454.00
4. Investments, \$1,000,000.00
5. Total assets, \$1,000,000.00
6. Total liabilities, \$1,000,000.00
7. Total assets, \$1,000,000.00
8. Total liabilities, \$1,000,000.00
9. Total assets, \$1,000,000.00
10. Total liabilities, \$1,000,000.00
11. Total assets, \$1,000,000.00
12. Total liabilities, \$1,000,000.00
13. Total assets, \$1,000,000.00
14. Total liabilities, \$1,000,000.00
15. Total assets, \$1,000,000.00
16. Total liabilities, \$1,000,000.00
17. Total assets, \$1,000,000.00
18. Total liabilities, \$1,000,000.00
19. Total assets, \$1,000,000.00
20. Total liabilities, \$1,000,000.00
21. Total assets, \$1,000,000.00
22. Total liabilities, \$1,000,000.00
23. Total assets, \$1,000,000.00
24. Total liabilities, \$1,000,000.00
25. Total assets, \$1,000,000.00
26. Total liabilities, \$1,000,000.00
27. Total assets, \$1,000,000.00
28. Total liabilities, \$1,000,000.00
29. Total assets, \$1,000,000.00
30. Total liabilities, \$1,000,000.00
31. Total assets, \$1,000,000.00
32. Total liabilities, \$1,000,000.00
33. Total assets, \$1,000,000.00
34. Total liabilities, \$1,000,000.00
35. Total assets, \$1,000,000.00
36. Total liabilities, \$1,000,000.00
37. Total assets, \$1,000,000.00
38. Total liabilities, \$1,000,000.00
39. Total assets, \$1,000,000.00
40. Total liabilities, \$1,000,000.00
41. Total assets, \$1,000,000.00
42. Total liabilities, \$1,000,000.00
43. Total assets, \$1,000,000.00
44. Total liabilities, \$1,000,000.00
45. Total assets, \$1,000,000.00
46. Total liabilities, \$1,000,000.00
47. Total assets, \$1,000,000.00
48. Total liabilities, \$1,000,000.00
49. Total assets, \$1,000,000.00
50. Total liabilities, \$1,000,000.00
51. Total assets, \$1,000,000.00
52. Total liabilities, \$1,000,000.00
53. Total assets, \$1,000,000.00
54. Total liabilities, \$1,000,000.00
55. Total assets, \$1,000,000.00
56. Total liabilities, \$1,000,000.00
57. Total assets, \$1,000,000.00
58. Total liabilities, \$1,000,000.00
59. Total assets, \$1,000,000.00
60. Total liabilities, \$1,000,000.00
61. Total assets, \$1,000,000.00
62. Total liabilities, \$1,000,000.00
63. Total assets, \$1,000,000.00
64. Total liabilities, \$1,000,000.00
65. Total assets, \$1,000,000.00
66. Total liabilities, \$1,000,000.00
67. Total assets, \$1,000,000.00
68. Total liabilities, \$1,000,000.00
69. Total assets, \$1,000,000.00
70. Total liabilities, \$1,000,000.00
71. Total assets, \$1,000,000.00
72. Total liabilities, \$1,000,000.00
73. Total assets, \$1,000,000.00
74. Total liabilities, \$1,000,000.00
75. Total assets, \$1,000,000.00
76. Total liabilities, \$1,000,000.00
77. Total assets, \$1,000,000.00
78. Total liabilities, \$1,000,000.00
79. Total assets, \$1,000,000.00
80. Total liabilities, \$1,000,000.00
81. Total assets, \$1,000,000.00
82. Total liabilities, \$1,000,000.00
83. Total assets, \$1,000,000.00
84. Total liabilities, \$1,000,000.00
85. Total assets, \$1,000,000.00
86. Total liabilities, \$1,000,000.00
87. Total assets, \$1,000,000.00
88. Total liabilities, \$1,000,000.00
89. Total assets, \$1,000,000.00
90. Total liabilities, \$1,000,000.00
91. Total assets, \$1,000,000.00
92. Total liabilities, \$1,000,000.00
93. Total assets, \$1,000,000.00
94. Total liabilities, \$1,000,000.00
95. Total assets, \$1,000,000.00
96. Total liabilities, \$1,000,000.00
97. Total assets, \$1,000,000.00
98. Total liabilities, \$1,000,000.00
99. Total assets, \$1,000,000.00
100. Total liabilities, \$1,000,000.00

105 Legionnaires To Hold Parade Drive Sunday
Post No. 105 Legionnaires will conduct their monthly parade on Sunday, May 2. Trucks will leave the post home (621 Washington Avenue) at 9 a.m. Those wishing to participate are urged to bundle papers securely and to place them in front of their dwelling, alongside the curb.

Barbara Roth Wins Essay Contest On Sales Careers
Miss Barbara Roth, a senior in Belleville high school has been awarded a prize for the best essay on "Selling As a Career". The award will be presented at a luncheon meeting to be held at the Robert Treat Hotel, Newark, on Monday, May 24, at 12:15 a.m.

Barbara is a student in the sales classes of Mrs. Muriel Germaine, Mrs. Corral, will act as sponsor. She is a member of the business education company Barbara to the luncheon meeting at the Robert Treat Hotel, Newark, on Monday, May 24, at 12:15 a.m.

LEGAL NOTICE
PUBLIC NOTICE is hereby given that the town of Belleville, in the State of New Jersey, at a meeting of the Board of Commissioners, held on April 29, 1954, published in response to a call made by the Board of Commissioners, under Section 21 of the N. J. Revised Statutes.

1. Cash, including with other funds, \$1,000,000.00
2. In process of collection, \$5,360,000.00
3. Accounts receivable, \$2,000,454.00
4. Investments, \$1,000,000.00
5. Total assets, \$1,000,000.00
6. Total liabilities, \$1,000,000.00
7. Total assets, \$1,000,000.00
8. Total liabilities, \$1,000,000.00
9. Total assets, \$1,000,000.00
10. Total liabilities, \$1,000,000.00
11. Total assets, \$1,000,000.00
12. Total liabilities, \$1,000,000.00
13. Total assets, \$1,000,000.00
14. Total liabilities, \$1,000,000.00
15. Total assets, \$1,000,000.00
16. Total liabilities, \$1,000,000.00
17. Total assets, \$1,000,000.00
18. Total liabilities, \$1,000,000.00
19. Total assets, \$1,000,000.00
20. Total liabilities, \$1,000,000.00
21. Total assets, \$1,000,000.00
22. Total liabilities, \$1,000,000.00
23. Total assets, \$1,000,000.00
24. Total liabilities, \$1,000,000.00
25. Total assets, \$1,000,000.00
26. Total liabilities, \$1,000,000.00
27. Total assets, \$1,000,000.00
28. Total liabilities, \$1,000,000.00
29. Total assets, \$1,000,000.00
30. Total liabilities, \$1,000,000.00
31. Total assets, \$1,000,000.00
32. Total liabilities, \$1,000,000.00
33. Total assets, \$1,000,000.00
34. Total liabilities, \$1,000,000.00
35. Total assets, \$1,000,000.00
36. Total liabilities, \$1,000,000.00
37. Total assets, \$1,000,000.00
38. Total liabilities, \$1,000,000.00
39. Total assets, \$1,000,000.00
40. Total liabilities, \$1,000,000.00
41. Total assets, \$1,000,000.00
42. Total liabilities, \$1,000,000.00
43. Total assets, \$1,000,000.00
44. Total liabilities, \$1,000,000.00
45. Total assets, \$1,000,000.00
46. Total liabilities, \$1,000,000.00
47. Total assets, \$1,000,000.00
48. Total liabilities, \$1,000,000.00
49. Total assets, \$1,000,000.00
50. Total liabilities, \$1,000,000.00
51. Total assets, \$1,000,000.00
52. Total liabilities, \$1,000,000.00
53. Total assets, \$1,000,000.00
54. Total liabilities, \$1,000,000.00
55. Total assets, \$1,000,000.00
56. Total liabilities, \$1,000,000.00
57. Total assets, \$1,000,000.00
58. Total liabilities, \$1,000,000.00
59. Total assets, \$1,000,000.00
60. Total liabilities, \$1,000,000.00
61. Total assets, \$1,000,000.00
62. Total liabilities, \$1,000,000.00
63. Total assets, \$1,000,000.00
64. Total liabilities, \$1,000,000.00
65. Total assets, \$1,000,000.00
66. Total liabilities, \$1,000,000.00
67. Total assets, \$1,000,000.00
68. Total liabilities, \$1,000,000.00
69. Total assets, \$1,000,000.00
70. Total liabilities, \$1,000,000.00
71. Total assets, \$1,000,000.00
72. Total liabilities, \$1,000,000.00
73. Total assets, \$1,000,000.00
74. Total liabilities, \$1,000,000.00
75. Total assets, \$1,000,000.00
76. Total liabilities, \$1,000,000.00
77. Total assets, \$1,000,000.00
78. Total liabilities, \$1,000,000.00
79. Total assets, \$1,000,000.00
80. Total liabilities, \$1,000,000.00
81. Total assets, \$1,000,000.00
82. Total liabilities, \$1,000,000.00
83. Total assets, \$1,000,000.00
84. Total liabilities, \$1,000,000.00
85. Total assets, \$1,000,000.00
86. Total liabilities, \$1,000,000.00
87. Total assets, \$1,000,000.00
88. Total liabilities, \$1,000,000.00
89. Total assets, \$1,000,000.00
90. Total liabilities, \$1,000,000.00
91. Total assets, \$1,000,000.00
92. Total liabilities, \$1,000,000.00
93. Total assets, \$1,000,000.00
94. Total liabilities, \$1,000,000.00
95. Total assets, \$1,000,000.00
96. Total liabilities, \$1,000,000.00
97. Total assets, \$1,000,000.00
98. Total liabilities, \$1,000,000.00
99. Total assets, \$1,000,000.00
100. Total liabilities, \$1,000,000.00

SUBROGATE'S NOTICE
ESTATE OF JOSEPHINE H. DYER, deceased.
Notice is hereby given that the accounts of the subrogee, Trustee of the trust created by the will of Anna H. Dyer, et al., under the Twelfth Paragraph of the will of Anna H. Dyer, et al., for the settlement to the Essex County Court, Probate Division, on Thursday, the 1st day of June next.

LEGAL NOTICE
TAKEN NOTICE that application has been made to the Essex County Court, Probate Division, on Thursday, the 1st day of June next, for the settlement to the Essex County Court, Probate Division, on Thursday, the 1st day of June next.

BELLEVILLE PROPOSALS
Sealed proposals will be received by the Board of Commissioners of the Town of Belleville, at its meeting place in the Town Hall, Belleville, N. J., on Monday, May 10th, at 2:00 P. M., Eastern Daylight Saving Time, for the purchase of three (3) new 1954 Plymouth Cars, by the Town of Belleville, New Jersey, according to specifications on file in the office of the Purchasing Agent of the Town of Belleville, New Jersey. Proposals are to be submitted according to the requirements of the specifications which will be furnished by the Purchasing Agent.

SUBROGATE'S NOTICE
ESTATE OF HENRY C. BARRHORN, deceased.
Notice is hereby given that the accounts of the subrogee, Trustee of the trust created by the will of Anna H. Dyer, et al., for the settlement to the Essex County Court, Probate Division, on Thursday, the 1st day of June next.

BELLEVILLE PROPOSALS
Sealed proposals will be received by the Board of Commissioners of the Town of Belleville, at its meeting place in the Town Hall, Belleville, N. J., on Monday, May 10th, at 2:00 P. M., Eastern Daylight Saving Time, for the purchase of three (3) new 1954 Plymouth Cars, by the Town of Belleville, New Jersey, according to specifications on file in the office of the Purchasing Agent of the Town of Belleville, New Jersey. Proposals are to be submitted according to the requirements of the specifications which will be furnished by the Purchasing Agent.

ELECT KENNETH D. SMITH FOR COMMISSIONER

STANDS FOR

- Harmony and Coordination of Board of Commissioners
- Charter study referendum
- An elective school board
- The attraction of new industry to Belleville
- Relief from mounting property taxation
- Better street lighting
- The intensification study and work to reduce juvenile delinquency
- Improvement in parking conditions and traffic control
- Strengthening our Civil Defense
- Health stations in the western section of Belleville
- A non-political, non-salaried planning board
- A qualified citizens committee to serve on non-salaried advisory boards and councils
- Belleville needs men of vigorous leadership, courage, vision and imagination to solve its many vital problems not only for the present but also for the future welfare of Belleville
- Belleville needs men who know fully the problems and civic needs of our town; Belleville needs men who have the complete welfare of Belleville and all its citizens in their hearts
- Men like

KENNETH D. SMITH

VOTE 4A

Kenneth D. Smith

Paid For by Kenneth D. Smith Ass'n.



an invitation... and a promise!

A&P promises to save money for you and millions of others by offering low prices in every department, every day... and invites you to come see how this can help cut your food bills!

Customers' Corner

Famous Favorites Found ONLY Here!

Our customers know that they can always find a wide variety of nationally-advertised brands of food at A&P.

But many of the quality food products sold in A&P can't be bought in any other food store!

Only at your A&P can you buy such nationally known favorites as Eight O'Clock, Red Circle or Bokar Coffee; Ann Page Fine Foods; Jane Parker Baked Goods; and many other food items made by A&P to A&P's high quality standards.

You'll find the store-wide low prices "right neighborhood," too. Come see... come save... at A&P.

CUSTOMER RELATIONS DEPARTMENT

420 Lexington Ave., N. Y. 17, N. Y. A&P Food Stores

Bon-Ami Cleanser Dif Hand Cleaner

2 12 oz. cans 23¢

8 oz. pkg. 21¢

SWANSON'S — FROZEN

Turkey, Chicken or Beef



PIES

3 8 oz. pkgs. 85¢

Sweetheart Soap Blu-White Flakes

Combination 1 cent sale
4 reg. 26¢ 4 bath. 36¢
9 oz. 23¢
4 3 oz. 26¢

SNOW CROP — FROZEN



Citrus Juices

Grapefruit or Blended

2 6 oz. cans 27¢

Air Wick

Dripless odor

8 1/2 oz. 59¢

Spic & Span

For washing painted surfaces

large 23¢ giant 75¢

DOWNYFLAKE — FROZEN

Waffles

2 pkgs. of 6 37¢



1 Minute Waffles... just pop in toaster and serve

Colgate's Fab

For laundry and dishes

large 30¢ giant 72¢

Colgate's Vel

For laundry and dishes

large 30¢

PUSS 'N BOOTS



Cat Food

3 8 oz. cans 25¢ 2 15 oz. cans 27¢

Spratt's Dog Biscuits

Assorted

12 oz. pkg. 19¢

Orleans Dog Food

All horsemeat

15 1/2 oz. can 21¢

Come See A&P's Low Prices on "SUPER-RIGHT" MEATS

Chickens Broiling and Frying
Fresh Top Grade Only—Ready-to-Cook—Sizes Under 3 lbs. **43¢**

Ribs of Beef Regular Style 10 Inch Cut **53¢** 7 Inch Cut **59¢**

Oven-Ready Ribs of Beef In Self-Service Meat Dept. 10 Inch Cut **63¢** 7 Inch Cut **69¢**

Rib Steaks	10 inch cut	lb. 63¢	7 inch cut	lb. 69¢	Sliced Bacon	"Super-Right" 1/2 lb. pkg.	45¢	1 lb. pkg.	87¢
Top Round Roast or Steak	Boneless	lb. 85¢			Pork Chops	Hip and shoulder cuts			55¢
Top Sirloin Roast or Steak	Boneless	lb. 85¢			Loin Pork Chops	Center cuts			89¢
Boneless Chuck Pot Roast		lb. 59¢			Smoked Beef Tongues	Short cut			53¢
Boneless Brisket Beef	Fresh or corned	lb. 69¢			Frankfurters	"Super-Right"—skinless			55¢
Ground Beef	Freshly-ground	lb. 39¢			Fowl	Ready-to-cook—for casseroles, salads			53¢
Rib Lamb Chops	Short cut—less waste	lb. 89¢			Ducks	Top grade—ready-to-cook			55¢
Shoulder Lamb Chops	All cuts	lb. 79¢			Turkeys	Pilgrim quality			65¢
Breast of Lamb	For stewing or braising	lb. 15¢			Turkeys	Ready-to-cook—sizes 4 to 7 lbs.			63¢
Boneless Veal Roast	Shoulder	lb. 55¢			Pork Sausage	"Super-Right" Meat lb. pkg.	49¢	Link 1/2 lb. pkg.	69¢
Loin Veal Chops		lb. 79¢			Fresh Crabmeat	Regular			49¢
Stewing Veal	Boneless	lb. 39¢			Fresh Flounder Fillet	Available only in fresh fish dept.			69¢

Come See A&P's Low Prices on GROCERY NEEDS



Cling Peaches Del Monte Sliced or Halves **2 29 oz. cans 53¢**

Pineapple Juice Del Monte **2 46 oz. cans 57¢**

Prune Juice	Del Monte	2 32 oz. bottles 55¢	Tomato Catsup	Del Monte	2 14 oz. bottles 31¢
Sweet Peas	Del Monte—Early Garden	2 17 oz. cans 37¢	Tomato Sauce	Del Monte	7 8 oz. cans 50¢
Fruit Cocktail	Del Monte	2 17 oz. cans 25¢	Golden Corn	Del Monte—cream style	2 17 oz. cans 33¢
Bartlett Pears	Del Monte	2 17 oz. cans 29¢	Stewed Tomatoes	Del Monte	2 16 oz. cans 21¢
Sliced Pineapple	Del Monte	2 20 oz. cans 31¢	Sliced Beets	Del Monte	2 16 oz. glass cans 17¢
Royal Anne Cherries	Del Monte	2 17 oz. glass cans 33¢	Asparagus Tips	Del Monte—Early Garden	2 10 1/2 oz. glass cans 28¢
Seedless Raisins	Del Monte	2 15 oz. glass cans 19¢	Diced Beets	Del Monte	2 16 oz. glass cans 17¢

Tomato Juice	Iona Brand	3 18 oz. cans 25¢	Ritz Crackers	Nabisco	16 oz. pkg. 32¢
Golden Corn	Dream Style Various Brands	4 8 oz. cans 23¢	Potato Chips	Jane Parker	16 oz. box 59¢
Cling Peaches	A&P quality Sliced or halves	2 16 oz. cans 37¢	Whole Green Beans	Sulfana brand	15 1/2 oz. can 27¢
Pineapple Juice	A&P quality	2 16 oz. cans 14¢	Greenwood's Red Cabbage	Home Style	2 16 oz. jars 33¢
Plum Preserves	Ann Page	2 16 oz. glass jars 39¢	Van Camp's Beans	With pork and tomato sauce	2 16 oz. cans 25¢
Strawberry Preserves	Louis Sherry	2 16 oz. glass jars 19¢	Broadway Redi Meat		2 16 oz. cans 47¢
Jane Parker Cookies	4 varieties Sandwich Creams	2 16 oz. glass jars 31¢	Mayonnaise	Ann Page	16 oz. jar 33¢
Burby's Cookies	Chocolate Chip	2 16 oz. glass jars 31¢	Instant Ralston Cereal		2 16 oz. glass jars 28¢
Pillsbury Angel Food Mix		2 16 oz. glass jars 55¢	G. E. Light Bulbs	40 or 60 Watt	each 17¢
Nestle Cookies Mix		2 16 oz. glass jars 35¢	Marcal Pastel Napkins		3 25¢
Golden Honey	Ann Page	2 16 oz. glass jars 31¢	Angel Soft Facial Tissues	White	2 400 43¢

Celebrate National Baby Week with A&P BABY FOOD BUYS

Evaporated Milk	White House	4 tall cans 47¢	Beech-Nut Baby Cereals	Blended Oatmeal	8 oz. pkg. 16¢
Pablum Cereals	Rice, Barley, Oatmeal	8 oz. pkg. 19¢	Libby's Orange Juice	Strained	3 4 oz. cans 25¢
Heinz Pre-cooked Baby Cereal		3 16 oz. pkgs. 16¢	Bib Orange Juice	For Babies	3 4 oz. cans 25¢
Swift's Egg Yolks	For Babies	3 1/2 oz. can 21¢	Bib Orange & Apricot Juice		3 4 oz. cans 25¢

Gerber's Baby Cereals All varieties 8 oz. pkg. 16¢ Swift's Meats for Babies . . . can 21¢

Glapp's Baby Food 5 jars 49¢ Junior Food 6 jars 89¢ Libby's Baby Food Strained 5 jars 49¢

Kretschmer's Wheat Germ . . . 12 oz. jar 31¢ Mazola Oil For cooking or salads gallon 2.13

BUTTER

Sunnyfield Fresh
Fancy Creamery
Salt or Sweet
(In 1/4 lb. prints lb. 65¢)

1 lb. brick **63¢**

Sunnybrook—Fresh Grade "A" Large—From Nearby Farms

White Leghorn Eggs carton 59¢

Sharp Cheddar Aged over 1 Year lb. 57¢

Sliced American Cheese Mel-O-Bit process lb. 49¢

Sliced Swiss Cheese Fancy Domestic lb. 63¢

Cream Cheese Philadelphia or Borden's 8 oz. pkg. 37¢ 2 3 oz. cups 29¢

Borden's Cottage Cheese Fancy 8 oz. cup 30¢

Sunnyfield Whipped Butter Salt or Sweet 8 oz. cup 39¢

Low Prices Every Day on FRUITS and VEGETABLES

Yellow Bananas Golden Ripe 2 lbs. 25¢

Fresh Sweet Corn Florida 4 ears 23¢

Washed Spinach Regalo Brand—trimmed 10 oz. cello bag 17¢

Fresh Peas California 2 lb. 29¢

Fresh Broccoli From Western farms bunch 19¢

Fresh Beets Southern farms bunch 10¢

Radishes Southern farms bunch 5¢

Rhubarb *Nearby farms bunch 10¢

Iceberg Lettuce Western large head 19¢

Pascal Celery Regalo Brand extra large stalk 19¢

Fresh Carrots Western 1 lb. cello bag 15¢

Florida Grapefruit Marsh seedless medium size 3 for 20¢

Come See A&P's Low Prices on BAKERY TREATS

Strawberry Pie Jane Parker each 59¢

Pound Cake Jane Parker—Gold or Marble 25 oz. 49¢

Sponge Layers Jane Parker For quick short cake pkg. of 2 for 35¢

Caramel Pecan Buns Jane Parker pkg. of 9 for 33¢

Cowboy Cup Cakes Jane Parker pkg. of 6 for 25¢

Donuts Plain, Cinnamon or Sugar pkg. of 12 for 23¢

White Bread Jane Parker Saves you up to 5¢ a loaf Jane Parker—sliced 16 oz. loaf 15¢

Come See A&P's Low Prices on LIBBY'S FROZEN FOODS

Libby's Sweet Peas 2 10 oz. pkgs. 31¢

Libby's Spinach Leaf or Chopped 10 oz. pkg. 17¢

Libby's French Fried Potatoes 2 10 oz. pkgs. 29¢

Libby's Grape Juice 2 6 oz. cans 39¢

Libby's Broccoli Spears 2 10 oz. pkgs. 45¢

Libby's Cut Corn Golden whole kernel 2 10 oz. pkgs. 33¢

Niagara Laundry Starch 12 oz. pkg. 19¢



THE GREAT ATLANTIC & PACIFIC TEA COMPANY

Prices effective thru Saturday, May 1st, in Super Markets and Self-Service stores only.

Rodino Seeks Divine Tribute Inserted In Allegiance Pledge

10th District Congressman Submits Bill Asking Words "Under God" Be Included By Law In Text Of Pledge Given In Salute To Flag

Congressman Peter W. Rodino, Jr., introduced a bill in Congress this week to revise the pledge of allegiance to the flag of the United States by inserting the words "under God". In an extension of remarks printed in the Congressional Record, Rep. Rodino explained that since the days of the Mayflower compact all patriotic utterances have been prefaced by an appeal for divine protection. The bill was sent to the judiciary committee, of which Rep. Rodino is a member, for study.

If Congress approves Rodino's proposal, the revised pledge of allegiance will read: "I pledge allegiance to the flag of the United States of America and to the Republic for which it stands, one nation, under God, indivisible, with liberty and justice for all."

The 10th District Congressman's bill provides that the pledge should be rendered by standing with the right hand over his heart, but civilians may show respect to the flag, while the pledge is given, by merely standing at attention, men removing their hats. Persons in uniform will render a military salute as the pledge is given.

"The opening words of the Mayflower compact — 'In the name of God, amen' — seem to me a most appropriate invocation to use in prefacing an appeal for support of the movement to add the words 'under God' to the Pledge of Allegiance to the Flag of the United States," Congressman Rodino told Congress.

"This is a thoroughly American movement, enlisting the enthusiastic support of Republicans and Democrats, Christians and Jews. It is in the tradition of the Virginia bill of rights, which defined religion as the duty which we owe to our Creator and the manner of discharging it, and of the Declaration of Independence, which, though a brief document, refers to God no fewer than four times.

"The pledge of allegiance should be proclaimed in the spirit with which the signers of the Declaration closed that mighty

each other our lives, our fortunes, and our sacred honor."

"This recognition of God as the Creator of mankind, and the ultimate source both of the rights of man and of the powers of government, is common to all the constitutions of the Thirteen Original States. It is, in brief, the basis of the political philosophy on which the Federal Government and all the State governments were built and continue to operate.

"As a Democrat and a Catholic, I am happy and eager to join with others of various political beliefs and religious faiths, in urging that the two words, 'under God,' necessary to complete the pledge of allegiance in its full meaning, be inserted.

"Let us all join in this effort, in the spirit of the words attributed to George Washington with reference to the work to be done by the Constitutional Convention: 'Let us raise a standard to which the wise and just can repair. The event is in the hand of God.'"

PL 9-1497
WA 3-5621

EYES EXAMINED

Dr. M. Roachvarg
OPTOMETRIST

Hours:
DAILY: 10-12 — 2-6
Evenings: Mon and Fri. to 8
And by Appointment
Closed Wednesdays

132 Washington Avenue
Belleville



VITA BRAND
"PARTY SNACKS"
HERRING FILLETS in WINE SAUCE
delicious... ready to serve!
VITA FOOD PRODUCTS, INC.
644 GREENWICH ST., NEW YORK 14

Acme

is having a great big \$1.00 SALE!



SAVE 40 to 50% on Household Institute Waterless Cookware

You're invited to join the Thrift Parade to Acme—where there are always exciting bargains, and bargains are better during the wonderful Bargain Binge!

Funk & Wagnall
Universal Standard Encyclopedia
Ret. \$1 Value! Yours for Only
99¢
With Any Purchase
Volume No. 1 Still Available
For Only 25¢
And Purchase of \$2.50 or More
Volume No. 2, 3 & 4 only 99¢ each, with any purchase. 25 volume set in all guaranteed \$100 value!

FROZEN FOODS

BIRDSEYE
Mixed Vegetables
SPECIALLY PRICED! **2 10-oz. pkgs. 37¢**

BIRDSEYE
Wax Beans
2 10-oz. pkgs. 41¢

Birdseye Cauliflower 10-oz. pk. 27¢
Peas & Carrots BIRDSEYE 10-oz. pk. 17¢
Broccoli Spears IDEAL Brand 10-oz. pk. 23¢
Grapefruit Juice 2 cans 27¢
Whipped Potatoes BIRDSEYE 2 10-oz. pkgs. 27¢
Waffles DOWNYLAKE the coupon in 2 boxes, each 25¢. Inactive Wafflecooker pkgs. 37¢

BAKERY

Maple Pecan Ring
Regular 49¢ Value!

Maple flavored cake studded with pecans. At all Acme's! **45¢**

VIRGINIA LEE Sliced Cinnamon

Streussel Bread 29¢

SUPREME WHITE

Bread 16-oz. loaf **15¢**

Save up to 5¢ a loaf! Finest ingredients. Dated for freshness!

Del Monte Pears Halves **4 17-oz. cans \$1.00**

Farmdale Peas LARGE SWEET **8 16-oz. cans \$1.00**

Prune Juice SUN VALLEY **4 32-oz. bottles \$1.00**

Ideal Corn Fancy Golden Whole Kernel **7 16-oz. cans \$1.00**

Pork & Beans IDEAL **10 16-oz. cans \$1.00**

Kidney Beans GOODLAND RED **12 16-oz. cans \$1.00**

Pride of Farm Catsup **6 14-oz. bottles \$1.00**

Ideal Spaghetti Prepared With Tomato Sauce **4 15 1/2-oz. cans \$1.00**

Peaches IDEAL Sliced Yellow Cling **8 8-oz. cans \$1.00**

Spaghetti & MEAT BALLS Chef Boy-Ar-Dee **4 15 1/2-oz. cans \$1.00**

Preserves IDEAL Pure Crushed Cherry, Peach or Blackberry **4 16-oz. jars \$1.00**

Grapefruit IDEAL Fancy Sections **7 16-oz. cans \$1.00**

Chocolate Syrup HERSHEY **6 16-oz. cans \$1.00**

Graham Crackers NABISCO **16-oz. pkg. 27¢**

Kee Detergent or No Rinse 1/2 Price Sale **2 large pkgs. 35¢**

MEAT FEATURES

GOVERNMENT GRADED "U. S. CHOICE"

Round Roast OR **STEAK** **lb. 79¢**

ALL MEAT, No Fat Added! All Acme beef is guaranteed top-quality, government graded "U. S. CHOICE!"

Fresh Killed FRYING Chickens **lb. 35¢** Ready-for-the Pan **lb. 47¢**

Chuck Lamb 3 lb. Combination lb. 39¢	Tongues lb. 49¢	Fillet Flounder lb. 49¢
Pork Butts lb. 59¢	Beef Hearts lb. 19¢	Fillet Whiting lb. 35¢
Picnics lb. 49¢	Liverwurst lb. 59¢	Cod Steak lb. 43¢
Bacon lb. 49¢	Midget Bologna lb. 59¢	Scallops 4-Fishermen 7-oz. 49¢
Beef Liver lb. 35¢	Midget Salami lb. 59¢	Fish Fillets Mrs. Pauls Pre-Cooked pkg. 33¢

FRESH FRUITS & VEGETABLES

ASPARAGUS **2 lbs. 29¢**

BANANAS GOLDEN RIPE **2 lbs. 25¢**

Florida Corn Tender Sweet 5 ear. 29¢	Scallions Jersey bunch 5¢
Oranges Florida dozen 39¢	Escarole & Chicory cello pk. 19¢
Grapefruit Florida Seedling 3 dozen 20¢	Escarole cello pk. 19¢
Lettuce Iceberg head 19¢	Chicory cello pk. 19¢
Cucumbers Florida 2 for 15¢	

Rindless Swiss **lb. 63¢**

Extra Sharp **79¢** **Liederkrantz** **1-oz. pk. 39¢**

Provolone **57¢** **American** **1-oz. pk. 39¢**

Velveta **53¢** **Biscuits** BALLARD Oven-Ready **2 1-oz. pkgs. 29¢**

Cream Cheese 2 3-oz. pkgs. **29¢** **Cottage Cheese** **8-oz. cup 19¢**

Milk **22¢** **Homogenized** **Quart Carton 23¢**

COOKIES, CRACKERS

Cookies BUEY'S Peanut Brittle 8-oz. pk. 21¢
Keebler Salines 16-oz. package 27¢
Premium Crackers NABISCO Honey, pk. 12-oz. pk. 27¢
Sunshine Hydrox 12-oz. cello pk. 39¢
Vienna Fingers SUNSHINE 16-oz. cello pk. 39¢
Fancy Assortment WESTON 10-oz. pk. 29¢

PANTRY NEEDS

Shredded Wheat NABISCO 12-oz. pk. 18¢
Hash ARBOUR Corned Beef 16-oz. can 29¢
Herb-Ox Bouillon 3 pkts of 3 22¢ 2 pkts 15¢

KIRKMAN FEATURES

Kirkman's Borax Soap 3 8-oz. pkgs. 25¢
Kirkman's Flakes 16-oz. can 30¢
Kirkman's Cleanser 2 16-oz. cans 19¢
Complexion Soap 8-oz. pk. 28¢
Detergent KIRKMAN'S 5th Canyon 16-oz. can 72¢
Kirkman's Detergent 16-oz. can 41¢
Granulated With Talcin' Hanky 16-oz. can 31¢

DAIRY

Better living...
greater family
happiness

obtain a FIDELITY UNION

modernization loan

Pride is an important factor in family happiness... And who is not proud when the home gets a new coat of paint and the interior is painted and papered.

Many home improvements are available through a Fidelity Union Low Cost Home Improvement Loan, for 36 months!

Call at the Fidelity Union office nearest you and tell us what you require. We will be glad to help you. Telephone or write.

PERSONAL LOAN DEPARTMENT

Fidelity Union Home Improvement Loans are available up to 36 months for this work. Check over this list and Act Now!

1. Modern Bathroom.
2. New Sun Porch and an additional room.
3. Hot Water Heating System.
4. Modern Heating Plant and complete heating systems.
5. House painting...Interior and exterior...wall paneling, papering, etc.
6. Plumbing and Fixtures.
7. Modern Kitchen.
8. Insulation.
9. Combination storm windows, screens and weather strippings.
10. Re-roofing and re-siding.
11. New Garage.
12. Concrete work.
13. New leaders and gutters.
14. Steel wire fences.
15. Other improvements.

FIDELITY UNION

Trust Company

15 OFFICES IN ESSEX COUNTY

IN NEWARK 755 Broad Street...MAArk 2-5800 1 Bloomfield Ave. HUmboldt 3-4253 464 Broad Street...HUmboldt 2-0009 505 Clinton Ave. BUrglow 3-1400 2 Ferry Street...MAArk 3-5500 215 Ferry Street...MAArk 2-3171	158 Fleming Avenue...MAArk 3-1750 295 Lyon Avenue...WArter 9-6262 300 Orange St. HUmboldt 3-6500 241 Springfield Ave. BUrglow 3-5000 IN BELLEVILLE 144 Washington Ave. PL'm'ib 9-3300	IN EAST ORANGE 480 Central Avenue...ORange 5-5174 329 Main Street...ORange 7-2400 224 North 10th...ORange 3-4629 IN IRVINGTON 1097 Clinton Ave. ESsex 3-1500
---	--	---

MEMBER FEDERAL DEPOSIT INSURANCE CORPORATION

THE BELLEVILLE TIMES-NEWS

ADVERTISING, NEWS AND BUSINESS OFFICE
322 WASHINGTON AVENUE
Published every Thursday by The Belleville
News Corporation, Belleville, N. J.
Telephone Plymouth 9-8200
RALPH E. HEINZEN, EDITOR AND PUBLISHER

Flower Of May

Flower of May,
Flower of the Pilgrims,
Unfold your modest blossoms,
Half-hidden by green leaves and moss;
Spreading with trailing stems across
pastures,
Girdling pine trees, dotting open fields,
Shell-pink fragrance beneath white birches,
Arbutus covered by the leaves of autumn,
Arbutus rooted in lingering, late snows.
Your clusters triumph over brighter blooms
With pastel unobtrusiveness,
Testament of spring.

Louise Darcy

The Folly Of Political Pap

If "High Tax Bobby" has his way, our taxes will be increased next year by at least \$82,600,000. If the Republican controlled Legislature has its way, the increase will be held to \$31,000,000, to be financed chiefly by adding another penny to the state's gasoline tax, adding \$2,700,000 to the state's take on the money bet on horse races and tacking \$13,500,000 more on the tax on business corporations.

The legislators are willing to go along with a \$31,000,000 increase in state aid to schools. Governor Meyner will have a fight on his hands to win approval of any of his other new tax projects.

State aid to public schools is a political folly, a \$58,000,000 annual folly if the proposed increase in taxes goes through. Proof that it is political in purpose is evident in its distribution. The Tax Policy Commission, which dreamed up this costly folly, has recommended that the state aid to schools be distributed not on a per capita basis but "where it is needed most."

There are 558 school districts in New Jersey. If the \$58,000,000 in total aid was distributed evenly, on a pro rata basis calculated on actual daily public school attendance, the new program would provide average State aid of \$80.52 per pupil. But that is not the intention. The Tax Policy Commission has recommended, and "High Tax Bobby" has concurred, that the poorer school districts must receive more than the richest.

Occupational Therapist To Speak At Society For Crippled

Mrs. Elizabeth Wagner, occupational therapy consultant for the National Society for Crippled Children and Adults, will be the speaker for the sixth in a series of 10 lectures and panel discussions, tonight at 8 o'clock in the Council of Social Agencies Building, at 60 South Fullerton Avenue, Montclair.

The series, geared to educate families of handicapped persons and workers among the handicapped, is sponsored by the New Jersey Society for Crippled Children and Adults and the Essex County Coordinating Council on Cerebral Palsy in conjunction

with Rutgers University. Mrs. Henry A. Baer of New Jersey Society is coordinator for the series.

Federation Of Women's Clubs Holds Annual Music Festival

The Northern Music Festival of the New Jersey State Federation of Women's Clubs will be held at 10:45 a.m., Tuesday, at the Orange Woman's Club, 369 Park Avenue, Orange. Presentation of "The Courtship of Miles Standish" and "The Life of Stephen Collins Foster" will be accomplished through the media of narrators, pantomimes, tableaux,

vocal and instrumental selections. Mrs. Lyman H. Ware, chairman of music of the New Jersey State Federation of Women's Clubs, will preside.



Satisfaction Plus Savings for HOME SEEKERS!

2 big books — 136 fact-filled pages... the safe shortcut to owning a better home for less money. 87 new Award Home designs and floor plans... created by Ralph A. Myers, America's foremost architect... including floor plans and invaluable data on the selection, financing, construction. Select the home that best meets your requirements... blueprints are available for every home. 80th books — over 200 illustrations — contemporary and traditional ranch, split-level, and cape cod models — only \$1.00 postpaid. Money-back guarantee. Send cash, check, money order, no C.O.D.'s. HOMEMASTER PUBLICATIONS 90-03a 160th St., Jamaica 32, N. Y.

Open Sundays to 1 P. M.

SPECIALS!

Supre-Turf Grass Seed
Guaranteed 5lbs 1.79
Green Circle Grass Seed
Free Bamboo Rake
Value 1.79 With
5 lbs CANISTER 3.29

Authorized Dealer



White Oaks Hardware
Making Homes More Comfortable (R)
78 Union Ave.
Nutley 2-4987

(R) Registered
Open Mon. & Fri. Evenings
Until 9
Sundays To 1 P. M.
Free Parking In Rear
For Our Patrons

One Man's Opinion

A Negotiated Compromise Establishing Lines
Along Present Battle Contours Appears Best
We Can Hope For At Geneva

By RALPH E. HEINZEN

In military history, the Communist encirclement of the French at Dien Bien Phu will rank, probably, with Custer's last stand and with Bastogne in the Battle of the Bulge. It can well become just another symbol of a military mistake, such as we fought at Batuan and Corregidor. In itself, it cannot decide a war but if the French had a Patton in the boots of General Navarre it might well be converted, still, into just such a victory as that we won at Bastogne in the darkest days of December, 1942. And France could use such a dramatic victory right now.

Win or lose at Dien Bien Phu, the Allies are now engaged, at Geneva, in negotiations which must relieve, for all time, the menace of a Communist breakout in South-eastern Asia. The Indochina crisis is too big to be decided on one battle. If there is to be a decision, it must come at Geneva and not in the nice paddies of Dien Bien Phu. Failure at Geneva may well mean a wider war.

In Washington, last week, I received confirmation, at the State Department, that the U. S. government would be satisfied with a negotiated compromise settlement at Geneva which would establish a truce line in Indochina such as was drawn along the 38th parallel in Korea. Any idea of forcing the Chinese Communists back out of the Red River valley by diplomatic negotiations must be abandoned. We should consider it a dashing victory, cheap at half the price, if hostilities can be ended in Indochina along the present battle lines.

War Risk Not Great

Despite the Nixon speech to editors, last week, in which he said flatly that we would send troops, if necessary, to save Indochina, it is more than evident, from happenings in Geneva this week, that the risk of a general war is not great. It becomes increasingly evident that we would not throw our own troops into the battle unless the Communists broke through in Indochina and pressed southward into Thailand and Malaya.

A negotiated settlement in Indochina, therefore, appears to be the maximum of our hopes, at present. Such a settlement would have to be practical, with recognition of the Communist gains. The Communists who are pressing the battle in Indochina risked a general war for the sake of a local gain. Moscow and Peking calculated to an inch how far they dared go in Indochina without risking the direct engagement of the military power of the United States.

Russia made one error in such calculations, in Korea. She went an inch too far and the United States went to war. If she avoids such a mistake in Indochina and if the Kremlin can hold back the Chinese Communists, she may get her local gain without involving us in military action.

Molotov must have had a strange feeling as he took his seat in the conference room at the old Lockport of Nations building in Arjan park. His predecessor, Litvin-

ov, had been kicked out of there without ceremony when the Soviet Union was expelled from the League, at a special session on the Assembly in December, 1939, because of her unprovoked aggression against Finland. I reported that last meeting of the League Assembly and was an eye-witness to Litvinov's embarrassment.

Learned Plan Is Failing

I learned in Washington last weekend that President Eisenhower and our top brass have known for a month past that the Navarre plan for saving Indochina is failing. General Ely confirmed that last meeting of the League Assembly and was an eye-witness to Litvinov's embarrassment.

Previously, hopes had been high that the Navarre plan would work. It called for holding lines this year while the training of native troops would be increased. By next year, everything would be ready and we could hope for important French Union gains. Now, alas, it seems unlikely that there will be any "next year" in French resistance.

It would be wrong to underestimate the strength of Red China and its determination to press on in Indochina. The Chinese Communist army may have lacked arms and training when it first went into action in Korea but its divisions have been schooled in that war and they are much more effective today. Red China has stepped up greatly and effectively its aid to the Vietnam rebels, sending such material, advisors and training instructors.



Did You
Get Yours?

Did you get your copy of the Riches of New Jersey? We published it last year. It is a 32-page booklet full of information about the agricultural products of New Jersey, the Garden State.

Printed in two colors, this book has interesting photographs of New Jersey scenes. It contains recipes, tables for cooking vegetables, for making jelly, for canning fruits, and directions for freezing vegetables and fruits. Thousands of women have sent for copies. Many of them have written to tell us how useful they have found the information.

PUBLIC SERVICE

Public Service Electric and Gas Company
Room 8315, 80 Park Place, Newark, N. J.

Please send me a copy of your booklet
"The Riches of New Jersey".

Name _____

Address _____

32 pages
photographs
recipes
household
hints



FREE

Ford Is First IN SALES

BECAUSE IT'S FIRST IN VALUE!

More people are buying Ford cars than any other make because they have found that Ford gives them more of the things they want — and at the price they want to pay.

National new car registration figures* for the latest six-month period available show Ford out front by thousands.

*SOURCE: R. L. Poll & Company, Registrations for period September through February.

See Ford...
Value Check Ford...
Test Drive Ford...
then you'll know why

Ford is America's
Best Seller!

GEORGE H. MEAD, INC.

190 WASHINGTON AVE.

BELLEVILLE, N. J.

Where's Elmer?!



at Franklin Casino

... where we help you roll up a score against inferior foods. Come tonight — and try our delicious dinner.



See your FORD DEALER'S
USED CARS

It's where you buy a used car that counts.

And, you'll find our prices rock bottom! That's because we've got to make fresh room for all the trade-ins we're getting on new car sales. Come on in and see our large selection of A-1 used cars. We've just the one for you.

We Ford Dealers are established businessmen. We want you to be completely satisfied with our used cars. After all, we want your service business... and we hope to sell you a new car some day.

It's easy to get fooled when you buy a used car. So your safest bet is to deal only with folks who have lots to gain by not fooling you.

A dealer
you can trust
sells a used car
you can trust

It stands to reason

FTL's Progress During 1953 Listed In IT&T Report

Laboratory In River Road Added 129,000 Square Feet To Largest Of Three Company Research Plants; Defense Projects Received Priority

A record high in earnings was reported by the International Telephone and Telegraph Corp. during 1953. Federal Telecommunications Laboratories is a member of the worldwide organization. Net figures climbed to \$22,377,611 or \$3.12 a share in 1953 from \$22,147,753 or \$3.09 a share in 1952.

FTL is the largest of three research and development centers conducted by IT&T. The Nutley plant continued to expand in 1953, according to the annual report, with defense projects of the U. S. government receiving priority.

A new laboratory building providing approximately 129,000 square feet of additional floor space was completed in River Road during the year.

FTL's commercial research and development work is directed towards the improvement of its standard lines of communication equipment as well as towards advanced research. Such research has proved its value to the Department of Defense in the field of guided missiles, countermeasures and surveillance radar.

The perfection of transistors during the year to meet the stringent requirements of reliability, constant and mass production has taken longer than was forecast by the industry in general.

The "gown-junction" type of transistor, on which FTL has concentrated their efforts, hold promise of giving high performance and long life. Work during 1953 was directed towards the solution of basic production techniques, and now is focused on commercial production. Meanwhile, the use of silicon is being examined as a means of overcoming limitations of the germanium transistor.

In the field of television, the laboratory contributed to the successful industry-wide solution of the color transmission problem. Design factors reflecting their experimental work in the transmission of color since 1945 have made it possible to adapt their black-and-white transmitters to color with minimum cost.

F. T. and R. Products. At Federal Telephone and Radio Corp., the principal products during 1953 were complete automatic telephone systems, selenium rectifiers, wire transmission equipment.

Delaporte & MacKinnon
PLUMBING - HEATING
TINNING
70 Belleville Avenue
Belleville, N. J.
Phone Plymouth 9-4323

FRANKLIN AVE. PAVING BEGINS, TRAFFIC JAMMED

Efforts To Cut Across Plunge Farm End Badly As Trucks Sink In Soft Roadway

The repaving of Franklin Avenue, from Jerusalem Street, at the top of the hill in Belleville, to Harrison Street was begun this week under the direction of Essex County engineers and provoked a serious traffic congestion as all through traffic on one of the county's main north-south thoroughfares was detoured.

Bloomfield Avenue and Passaic Avenue were designated as alternate routes for through traffic but many motorists sought to use Prospect Street through the Plunge farm as the shortest detour, with unhappy results. The road across the farm is paved at the Nutley end, but changes to a farm road at the southern end and many heavily laden trucks were mired in the mud.

County Engineer Curtis Colwell ordered work to start at both ends to shorten the period of reconstruction, but indicated that the street may be shut to traffic until late in the summer. Curb and sidewalks are being installed and the roadway is being flattened and repaved with a bituminous coating. A gap will left where a new

Hadassah Hold Program For Jewish National Fund Drive

The regular meeting of the Belleville-Nutley Chapter of Hadassah was held at Congregation Ahavath Achim, Belleville, on Tuesday with Mrs. Jerome B. Hamburger presiding.

Mrs. Abe Weinstein and Mrs. Louis Chaiken were in charge of the program which was dedicated to the Jewish National Fund.

A game called "Chair," she Hebrew word for "life," was played, consisting of questions and answers about Israel and the Jewish National Fund.

bridge will be built later across the Third River just south of Harrison Street.

Commissioner Elmer Hyde, head of the Department of parks and public property in Belleville, announced yesterday that as part of the improvement of Franklin Avenue, the Belleville park department will build a park and playgrounds along the Third River between Jerusalem Street to the Nutley line.

WCTU Holds Spring Institute Meeting At Vincent Church

The Women's Christian Temperance Union, of Essex County, will hold its spring institute meeting at Vincent Methodist Church, today at 10:30 a. m. President, Mrs. Luther McFarland, will preside. Mrs. Charles P. Hamond, county vice-president will be in charge of devotions. Mrs. William Johnston, will give the noon-day prayer, and Mrs. Arthur Hopkins will welcome the group.

At the afternoon session, beginning at 1:30, Mrs. Robert Mitchell will lead devotions. Other leaders will be Mrs. Grover Wilcox, vocal soloist; Miss Louise Hickok, light line missions; Mrs. Hazel Bealin, piano solo; state president, Mrs. Paul Christner, of Montclair, fence building; and Mrs. McFarland, activities.

Mrs. Harold F. Ross, Sr.

Mrs. Anna Wilkins Ross, of 47 Chadwick Drive, died Friday in St. Mary's Hospital, Passaic, after a 10-week illness. She was 53.

Mrs. Ross was born in Jersey City and had lived in Belleville 25 years before moving to Nutley two years ago.

Mrs. Ross Leaves Her Husband, Harold F. Ross, Sr.; a son, Harold F. Jr., of Belleville; a daughter, Mrs. Hope Summers, of Scotia, N. Y.; a sister, Mrs. Katherine MacDonnell, of Nutley, and two grandchildren.

Services were held Monday from George Van Tassel's Community Funeral Home, in Bloomfield. Rev. Dr. James K. Morse, of Peeworth Memorial Presbyterian Church, Belleville, officiated. Burial was in Greystone Cemetery, Clifton.

"Slalag 17" Given To Benefit Retarded Children's Ass'n

Mr. and Mrs. Harold Blinn, of 53 Emily Avenue, are ticket chairman for a play to be given by the Center Players, in Newark, for the benefit of the Essex Unit of the New Jersey Association for Retarded Children.

"Slalag 17" will be presented Thursday, May 6, at 8:30 p. m. at Ford Hall, 652 High Street, Newark. A guidance clinic, special classes and a proposed sheltered workshop for the retarded are among the projects which will benefit.

Boiling Water Results In 2nd Degree Burns To Store Owner

Mrs. Angelina Vigilanti, 43, of 12 Pleasant Avenue, Belleville, suffered second degree burns of her face and left arm in Charlie's Confectionery at 343 Franklin Avenue, Saturday, when she was scalded by boiling water from a coffee pot. She was taken to Columbus Hospital, Newark.

Charles Vigilanti, proprietor of the store, told Nutley police that the top of the coffee pot suddenly blew off.

Asks Aid For National Recreation Association

Support of the work of the National Recreation Association was asked this week by Miss Ann A. Troy, civic leader and Nutley sponsor of the association. In letters to local residents she referred to the work of the association in bringing games, songs, plays, hobbies, creative arts and crafts to boys and girls and men and women.

The recreation association was founded 48 years ago. Miss Troy called a gift to the association "one way to help provide a desirable way of life."

FOR APPOINTMENT PHONE NUTLEY 2-455
OFFICE HOURS: 9:00 A. M. TO 12 NOON
EVENINGS: 7 TO 9 P. M. MON., WED., & FRI.

Harold J. Wolff, O. D.

EYE EXAMINATIONS

375 FRANKLIN AVE.
NUTLEY, N. J.
Opposite Post Office

"FREE PARKING IN REAR"

Prepay Your Vacation Expenses!

JOIN OUR 1955 VACATION CLUB TODAY

You'll have a happier vacation next year, with money saved ahead through our popular Vacation Club. Just pick the class for the vacation you want, and make 50 convenient weekly deposits. Classes are \$1, \$2, \$3, and \$5.

The HOWARD SAVINGS Institution

768 BROAD STREET, NEWARK 1, N. J.

Branches at:
BLOOMFIELD & CLIFTON AVES. (Zone 4)
SPRINGFIELD AVE. & BERGEN ST. (Zone 3)
SOUTH ORANGE & SANDFORD AVES. (Zone 6)

Member Federal Deposit Insurance Corporation

FOOD FAIR

34th Anniversary Sale!

Our greatest value event of the year! Huge savings for you in every department at Food Fair.

Our 34th Anniversary Brings You Another Spectacular

Food Fair "Customer Service"

A SENSATIONAL STEMWARE VALUE!

This is by no means a sale of stemware in the ordinary sense! A tremendous saving, yes, but strictly as an added exclusive FOOD FAIR "CUSTOMER SERVICE." It is our way of showing you our appreciation for your continued patronage. Now you can get that fine stemware service you've always wanted . . . and at a price that makes it almost a gift.

START NOW!...

Each week for the next 24 weeks . . . Food Fair will feature one stemware piece at the low, almost give-away price of 19c with your purchase of \$5.00 or more EVERY DAY EACH WEEK.

This week: Get this handsome water goblet

• Hand Trimmed
• Guaranteed Rim Will Not Chip!

YOU SAVE \$12.00 ON THE FULL 24-PIECE SERVICE WORTH \$16.46! over 24 weeks you actually pay only \$456

HAVE AN X-RAY

12TH FREE COMMUNITY X-RAY PROJECT

NOW FOUR LOCATIONS

A Time and Place for Everyone

CHOOSE YOUR DATE

<p>SOHO BELLEVILLE</p> <p>FRIDAY</p> <p>APRIL 30, 1954</p> <p>Brighton Avenue and Harrison Street</p> <p>10 to 12 NOON</p>	<p>SILVER LAKE BELLEVILLE</p> <p>FRIDAY</p> <p>APRIL 30, 1954</p> <p>Franklin Street</p> <p>Opp. No. 3 Fire House</p> <p>2 to 5 and 7 to 9 P. M.</p>
<p>NUTLEY JUNIOR HIGH SCHOOL</p> <p>SATURDAY</p> <p>MAY 1, 1954</p> <p>10 A. M. to 6 P. M.</p>	<p>BELLEVILLE HIGH SCHOOL</p> <p>SATURDAY</p> <p>MAY 8, 1954</p> <p>10 A. M. to 6 P. M.</p>

Beautiful Queen Esther Pattern

LIBBEY safedge

STEMWARE

Regular **69¢** Value

• Warranted 22 Karat Gold Trimmed Rim, **only 19¢ each**

CLIP AND SAVE THIS STEMWARE SCHEDULE

WATER GOBLET weeks of Apr. 29, May 27, June 24, July 22, Aug. 19, Sept. 16

SHERBET GLASS weeks of May 6, June 3, July 1, July 29, Aug. 26, Sept. 23

JUICE GLASS weeks of May 13, June 10, July 8, Aug. 5, Sept. 2, Sept. 30

COCKTAIL GLASS weeks of May 20, June 17, July 15, Aug. 12, Sept. 9, Oct. 7

6 COCKTAIL GLASSES **6 JUICE GLASSES** **6 SHERBET GLASSES** **6 WATER GOBLET**

NOW TURN TO THE NEXT TWO PAGES FOR MORE BIG NEWS ABOUT HUNDREDS OF ANNIVERSARY VALUES

Come . . . Save! . . . at FOOD FAIR!

Sponsored by

THE BELLEVILLE - NUTLEY TUBERCULOSIS ASSN.

FREE TO ANYONE LIVING OR WORKING IN BELLEVILLE OR NUTLEY



And Now... Still Another Food Fair CUSTOMER SERVICE!

A Great Saving.. And—

34th Anniversary Sale!

Just look at all the exciting low prices! Famous Brands... Greatest variety in town! Our 34th Anniversary brings you hundreds of added values in every department. Come, S-A-V-E at Food Fair. You'll like the "change!"



FRUITS and VEGETABLES! Special ANNIVERSARY SAVINGS!

Luscious Red-Ripe LOUISIANA

STRAWBERRIES

Make a strawberry shortcake for dessert!
Get Fresh SPONGE Layers in our Bakery Dept. and REDDI-WIP in our Dairy Dept.

pint box **19¢**

- Golden Ripe Bananas lb. **9¢**
- Florida Oranges Sweet! Juicy! 5-lb. bag **39¢**

ATLANTIC Guaranteed
Miracle PLASTIC
GARDEN HOSE
25-ft. length \$1.99 50-ft. length \$2.98
Unconditionally guaranteed 5-years!

CHUN KING Vegetable Chow Mein DINNER

Just heat and eat!... serves 2 to 3 persons. pkg. **55¢**
Chun King Soy Sauce 3-oz. jar 10¢
Chun King Bean Sprouts 2 No. 303 cans 15¢
Chun King Chicken Noodles 2 No. 303 cans 15¢
Chun King Chicken Chow Mein 2 No. 303 cans 15¢
Chun King Meat Chop Sui 2 No. 303 cans 15¢
Chun King Sui Sam (Egg) 2 No. 303 cans 15¢

WESTON'S fancy ASSORTMENT

Ten varieties in this delicious assortment. 10-oz. pkg. **29¢**
Cocoanut Cookies with Chocolate Bits 8-oz. pkg. **29¢**

DURKEE'S Yellow Quarters MARGARINE

1-lb. pkg. **29¢**
The Gold Standard of Margarine — Durkee's own Grade "AA" Margarine — Use on the table, for cooking or baking.

Crosse & Blackwell Sweet Orange Marmalade

Serve on crackers (it's so delicious and tasty, too!) 1-lb. jar **27¢**

Crosse & Blackwell Date and Nut Roll

Tap off any mail with delicious date and nut roll! 8-oz. can **21¢**

Fred's

Steak Sauce 2-oz. jar **27¢**

Bitte Ready to Serve Mushroom Sauce 8-oz. can **10¢**

Van Brode Variety Pack Cereals

Assorted pkg. of 10 **29¢**

Fre-Mar Grape Jelly

Pure whole grape jelly and fruit 12-oz. jar **19¢**

Ehler's Grade A Coffee

Regular, Drip or Silex. Enjoy double, rich flavor! These packed for peak flavor! 1-lb. can **\$1.19**

Watermaid Rice

Fancy, Nourishing Quality Supreme! Recipes on package! 2-lb. cello pkg. **31¢**

Doxsee Minced Clams

Real tang of the velvety sea! Delicious for chowder! 8-oz. can **25¢**
Doxsee Clam Juice pt. bot. **27¢**

Reddi - Wip fresh Cream Topping

The quick, delicious way to make chocolate! 8-oz. can **49¢**



SIRLOIN STEAK

BLADE POT ROAST

GROUND BEEF

A Welcome Addition To Your "New World Family" Encyclopedia Set!

Handsomely Bound
4 MATCHING VOLUMES

1954 Deluxe Edition

WEBSTER'S World Family (REVISED)

EACH VOLUME

89¢

DICTIONARY

GET ONE VOLUME EACH WEEK FOR 4 WEEKS
During our 34th ANNIVERSARY EVENT AT
FOOD FAIR'S Sensational Low Price!...

Greatest Educational Value of the Century
For Any Age Group!...

- Entire set of 4 volumes worth \$10.00 normal retail!
- You actually pay only \$3.56 over the four weeks!
- Handsomely bound and illustrated... 1280 Pages!
- Matches Your "New World Family" Encyclopedia set!
- Includes Syntax and Antonyms, Grammar, and New World sections!
- Easier for the children to handle — No bulky weight!

Exquisite New Colors and Patterns!

ANNIVERSARY Featured! NEW IMPROVED VINYL PLASTIC

PLACE MATS

IN TWO NEW LINEN-TEXTURED PATTERNS...

"EMPIRE" "TRAILING VINE" A Regular **49¢** Value

WRINKLE RESISTANT!... Rinses Clean!
Wipes Dry!... Easy to Store... Lies Flat
Saves Laundering... No Ironing!... **ONLY 19¢** each



STREIT'S Chicken Soups

Kosher... prepared with KREPLACH No. 1 can **22¢**

Heart's Delight Nectars

Your choice of delicious Apricot, Peach or Pear! 2 1/2 oz. can **25¢**

Fisherman Fillets

Tasty fresh frozen fish fillets — ready to cook and serve! 1-lb. pkg. **39¢**



Anniversary Special Giant Value! Big 3-lb. Ring!

Banquet POUND CAKE **99¢** Choice of MARBLE ICED PLAIN or VANILLA ICED
You would normally pay \$2.88 for a cake only like this!

Valley Stream Asparagus

Fresh frozen tender green spears of asparagus! 10-oz. pkg. **29¢**

Cottage frozen Waffles

Just toast them and serve them, a real treat! 2 5-oz. pkgs. **29¢**

Booth Shrimp

Ready to deep fry and serve tonight! 10-oz. pkg. **65¢**

Mrs. Paul's Fish Sticks

Famous fresh frozen fish sticks, just heat and serve! 8-oz. pkg. **39¢**

Sundelish Maple Walnut Topping

Glorious desserts — Calif. walnuts in pure maple syrup! 7-oz. jar **33¢**

Cremo Marshmallow Creme

Delicious topping for all kinds of cakes and desserts! 8-oz. jar **23¢**

Dunhill's Licorice Allsorts

A tasty assortment of licorice flavored candies! 8-oz. pkg. **21¢**

Queen Anne Pecan Log

Creamy center log, covered with crunchy toasted pecans! 5-oz. pkg. **29¢**



WELCH'S Fruit of the Vine

The preserve of whole Concord grapes — in reusable dessert glasses. 8-oz. glass **29¢**

Milan's "1890" Fresh Dressing

The tangy, delicious French dressing to perk up salads! 8-oz. bot. **33¢**

White House Wine Vinegar

Wine vinegar will add aroma and flavor to salads! pt. bot. **17¢**

SNOW FLAKE fresh frozen

French Fries 2 9-oz. pkgs. **27¢**

RED CROSS (White box of 80—Colored box of 60)

Paper Napkins 2 boxes **19¢**

Terry's Miniature Mints

Chocolate covered, creamy mint, tasty and so delicious! 10-oz. pkg. **29¢**

Fyne-Taste Marshmallows

So fluffy! Toast them or eat them, so delicious! 14-oz. bag **25¢**

Royal Tibs

A tasty confection of caramelized popcorn, peanuts and coconut strips! 8-oz. pkg. **25¢**

Pop Quick Pop Corn

Packed in oil, guaranteed to pop! 2-lb. bag **25¢**

Realemon Lemon Juice

No fuss! No bother! Just open bottle and pour! 8-oz. bot. **21¢**

Fyne-Taste Prune Juice

Stratford Farms Prune Juice... 8-oz. bot. **29¢**

Marcal Hankies

Convenient, sanitary disposal tissue handkerchiefs! 3 boxes of 30 **22¢**

Onliwon Paper Towels

Onliwon Towel Holders... 3-pkg. **33¢**



It's*P.S.G. ma'am!

...that's all you need know about meats!...

***Protected**

Strict inspection protects Food Fair meats every step of the way to you... protects them also with scientifically-controlled refrigeration.

Selected

Food Fair meats are selected by long-experienced buyers who choose only the finest quality meats... to give you top value.

Guaranteed

To give you complete satisfaction, Food Fair meats are fully guaranteed. You must be absolutely pleased or your money back!

Cut From U.S. "CHOICE" Grade Steer Beef

PSG... U.S. CHOICE Graded Steer Beef

Rib Roast 49¢

lb. 10-inch cuts

ROASTING THE ROLLED RIB ROAST

Choose a rib roast, about two or three ribs to serve four to six. Have it boned and rolled. Prepare for roasting by wiping meat with damp cloth. Place in shallow pan fat side up on a rack. Do not add water; do not cover. Season with salt, pepper. Place in 325° F. oven. For rare beef, roast 27-30 minutes per pound. For medium, roast 30-35 minutes per pound. For well-done, roast 35-40 minutes per pound.



SHORT RIB



BRISKET



PLATE

DON'T FAIL TO GET YOUR COPY OF
Everywoman's Complete
BEEF GUIDE
by PRUDENCE DORN Food Editor

Featured in the New
MAY ISSUE of
EVERYWOMAN'S
MAGAZINE

The Woman's Guide to Better Living
NOW IN OUR STORES
And well worth many times the
low price you pay for it—

only **5¢**

Prudence Dorn, Food Editor of Everywoman's, tells how to select and prepare your favorite cuts of beef... A complete guide to ROASTING... BRAISING... BROILING, STEWING and WATER COOKING. You'll want to keep this issue.

Red Breast Fancy Coho Salmon . . . 33¢
Tender meat, fine flavored fancy salmon steaks!

Lucky Star Rock Lobster . . . 55¢
Genuine South African Rock Lobster for wonderful salads!

Friend's Brick Oven Beans . . . 35¢
Friend's Brown Raisin Bread . . . 20¢

Italian Kitchen Grated Cheese . . . 21¢
Finely grated, ideal for sauces, spaghetti, eggs and soups!

Blue Boy Dietetic Peas . . . 25¢
Blue Boy Dietetic White or Cream Corn . . . 27¢

Seaside Cooked Butter Beans . . . 25¢
Large cooked dry lima beans, just heat and serve!

No-Cal Dietetic Beverages . . . 29¢
All flavors, prepared without sugar, no bottle deposit!

Gem Oil . . . 65¢
Excellent for salads, pan and deep fat frying!

Fleetwood Motor Oil . . . 19¢
"Premium Quality," all grades, tax included!

Jonny Map . . . 98¢
Jonny Map Refills . . . 29¢

Nodor Bowl Deodorants . . . 27¢
Cures toilet odors—no scent remains!

Food Fair Book Matches . . . 27¢
Keep a supply at home!

HOFFMAN
Assorted Flavors
BEVERAGES

3 29-oz. 55¢
Plus Deposit

You'll love the true fruit flavors of Hoffman's... Plus ginger ale, club soda and root beer!



PETAL SOFT White or Colored

Toilet Tissue 2 1000 sheet rolls 23¢

Triple-Filtered For Extra Purity

Dazzle Bleach 2 29¢ 1/2-gal. bot. 27¢

Durkee Coconut 4-oz. box 18¢
Long shredded—fresh packed coconut!

Fre-Mar Maraschino Cherries . . . 29¢
Beautiful red color with real maraschino flavor!

Goodman's Egg Noodles . . . 35¢
Pure wholesome, fine, medium or wide noodles!

Sanalac Dry Milk Powder . . . 31¢
Non-fat milk, high in protein, so economical!

Bleachette Blue . . . 8¢
Safe, dependable laundry bluing!

Wax-Seal Self-Sealing Wax Paper . . . 29¢
New self-sealing wax paper, protects and preserves food!

Rid-O-Moth Crystals . . . 39¢
Protect your clothing, paradichlorobenzene crystals and nuggets!

Sani-Speed Household Sponges . . . 21¢
All purpose sponges for any household chores!



FRESH from Shore to Store! . . .

ALL MARYLAND
Fresh Picked
(The finest)

CRAB MEAT

Regular Lump . . . 79¢
Special Lump . . . 89¢
Deluxe or Back Fin All lower prices . . . \$1.39

Air Wick Air Refresher . . . 59¢
Air-Wick Mist . . . 89¢

Hunt-Club Dog Food . . . 31¢
So nourishing for your pet!

Gottschalk Metal Sponges . . . 23¢
Cleans, polishes, shines, so easy to use!

Bon-Ami Cleanser . . . 23¢
The household cleanser that polishes as it cleans!

SHEFFIELD MILK

Pure Homogenized
Pasteurized Vitamin D
qt. 22¢
bot. 23¢

Everybody goes for milk... it's tops for flavor and so nutritional!



Axelrod

Pineapple Pot Cheese
Cottage Cheese
(Reg. Chunk Style or Self-Fat Free)

2 25¢



Food Fair Reserves the Right to Limit Quantities!

Deep Blue Sea Tuna Fish
Packed in Brine
Light Meat White Meat
No. 10 can 29¢ No. 15 can 35¢

Stern's
Sweet Mixed Pickles
qt. 35¢

Fre-Mar
Stuffed Manzanilla Olives
3-oz. bot. 29¢



Martinson's Jomar
Instant Coffee
100% Pure Coffee 2-oz. jar 69¢

Carolina Beauty
Kosher Dill Pickles
qt. 31¢

Bovril
Beef Extract
A delicious beef concentrate—makes nourishing beef broth!
2-oz. bot. 45¢

Columbia Caps
A MACARONI made from No. 1 Semolina
1-lb. pkg. 26¢



WE ACCUSE THE NEW JERSEY RAILROADS



Taxes are paid in cash on the barrel-head, not in theory. No statistical mumbo-jumbo by railroads or anyone else can change the fact that the average big truck in Jersey actually pays in cash \$860 per year as compared with the actual payment of \$28 by the average passenger car.

By resorting to statistical trickery, and using passenger miles as the measuring stick, we could prove that the tax on the big truck should be reduced to \$50.

Or, that a boy or girl paying a 50 cent bicycle permit fee in Millburn, N. J., would pay six times as much for use of roads and streets as the average automobile on the railroad's ton-mile tax theory!

Preposterous? Of course—but no more so than the application of a ton-mile yardstick to a passenger-carrying auto!

Why do the railroads try to trick you this way? For one, they have no other way of trying to justify still higher truck taxes. Secondly, they don't want to admit what the figures really show—that a big truck in New Jersey actually pays 31 times as much in highway-use taxes as a passenger car! Or that, because of heavy fuel consumption, a typical inter-city truck will pay four to five times as much in fuel taxes as the passenger car for each mile traveled!

Further, they neglect to mention that trucks, representing only 12 per cent of all motor vehicles, paid 30 per cent of

all New Jersey motor vehicle taxes last year! In particular, the tax burden fell on the big trucks the railroads always talk about.

They also neglect to mention that, in 1952, the railroads paid \$17,589,148 in total taxes to the State of New Jersey. The trucking industry paid . . . \$26,043,000 in highway-use taxes, not including Real Estate Taxes!

Why are the railroads—whose anti-good road record is clear—so benevolently concerned about improving and maintaining them? Do they really want good roads?

Nonsense!

Competitively, roads are a problem because trucks and cars use them to provide low-cost service to industry and the public in every corner of the state.

The railroads want higher truck taxes—but NOT for better roads. Here is what an assistant vice president of the Pennsylvania Railroad said in testimony before a congressional committee in July, 1953, in connection with a grade crossing bridge to carry the new Baltimore-Washington Boulevard over the Pennsylvania's right-of-way:

"I would like to recite to you a little experience that we have had after a new highway had been built that allows accelerated speeds and is put down for the convenience of the motor vehicles, and what it does to our business. We handled before the New Jersey Turnpike was opened up 12,500 people a day from Philadelphia to New York. Today we are handling 7,500. The airplanes have not picked up a passenger. The buses have lost, too. We have lost 5,000 passengers a day, and we

ANYTHING CAN BE DONE WITH STATISTICS

Illustrating an old story, here we have a group of nine free, law-abiding men—and one convicted criminal. Statistically, each law-abiding man is one-tenth criminal!

And that is the way railroad propaganda could deceive you on the so-called weight-distance tax bill which they want the Legislature to pass.

They say that for every hundred ton-miles a passenger car travels on New Jersey roads, it pays more tax than a big truck. But cars are passenger-carrying vehicles—not freight haulers. What have freight-ton-miles to do with passenger cars?

Answer: Nothing!

are going to lose a percentage of passengers from Baltimore down here if you make us pay for this bridge, and you are making us buy the gun that we shoot ourselves with, if you make us pay any part of that cost."

The railroads can achieve their true aim only by crippling the use of highways—by supporting a vicious, punitive tax which, by necessity, would be passed on to you . . . to every housewife, working man, taxpayer, in everything you eat, wear and use.

It is evident, then, that the railroads, while advocating a new and complicated tax on the trucking industry, can realistically have no desire at all to contribute to better New Jersey roads.

At the same time that the railroads are saturating New Jersey with their propaganda against trucks, there are two bills before the legislature, one to cut their own New Jersey franchise tax in half and the other to eliminate all personal property tax!

That's a cozy arrangement—sock the trucks and cut the rail taxes!

The trucking industry always has and always will stand ready to bear its full share of the cost of building and maintaining New Jersey's roads, streets and highways.

What we pay in taxes you pay in the cost of transportation—and we reject the idea of our competitors trying to set our tax rates or our tax methods. We think you reject that un-American idea, too.

After all, none of us would think of attempting to deliver lettuce by putting it in a rabbit's mouth.

THE TRUCKING INDUSTRY OF NEW JERSEY

NEW JERSEY MOTOR TRUCK ASSOCIATION



NEWARK, NEW JERSEY